

Mayo Alzheimer's Disease Research Center (ADRC)

Dana Swenson-Dravis, MA
Alzheimer's Disease Research Center
Mayo Clinic College of Medicine
Rochester, MN and Jacksonville, FL

Outline for Presentation

- **Who am I?**
- **Brief history**
- **Mayo ADRC structure**
- **Operations**
- **Challenges**
- **Solutions**
- **Pilot Project Process**
- **Research Project Selection**

Who am I?

- **Education**

 - BA – Business & Healthcare Admin 1993

 - Internship: Human Resource Development

 - MA – Management 1999

- **Professional Experience**

 - Minnesota Center for Rural Health

 - Mayo Department of Family Medicine

 - Mayo Alzheimer's Disease Research Ctr

- **Personal Experience**

History of Mayo ADRC

- 1990 funded as ADCC
- 1995 successful renewal
- 1998 responded to RFA for ADRC's
- 1999 funded as P50
- 2004 renewed as P50
- 2009 anybody's guess

Mayo ADRC

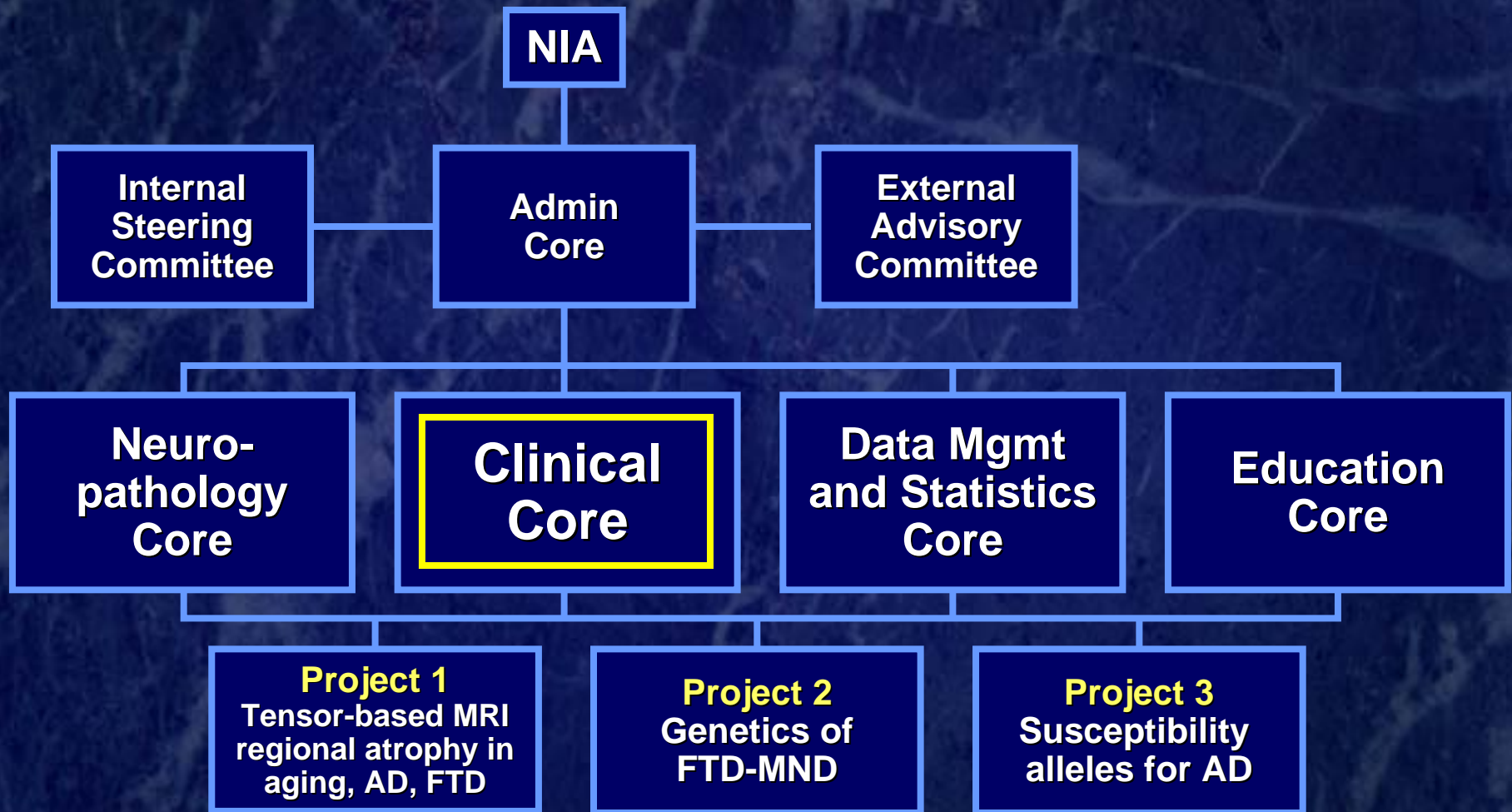


Rochester, MN



Jacksonville, FL

Mayo ADRC Structure



Operations

- **Department of Neurology referrals**
- **Community Internal Medicine (Rochester controls)**
- **African American Community (Jacksonville controls)**
- **Referrals from community physicians**
- **Agency referrals**
- **Word of mouth**

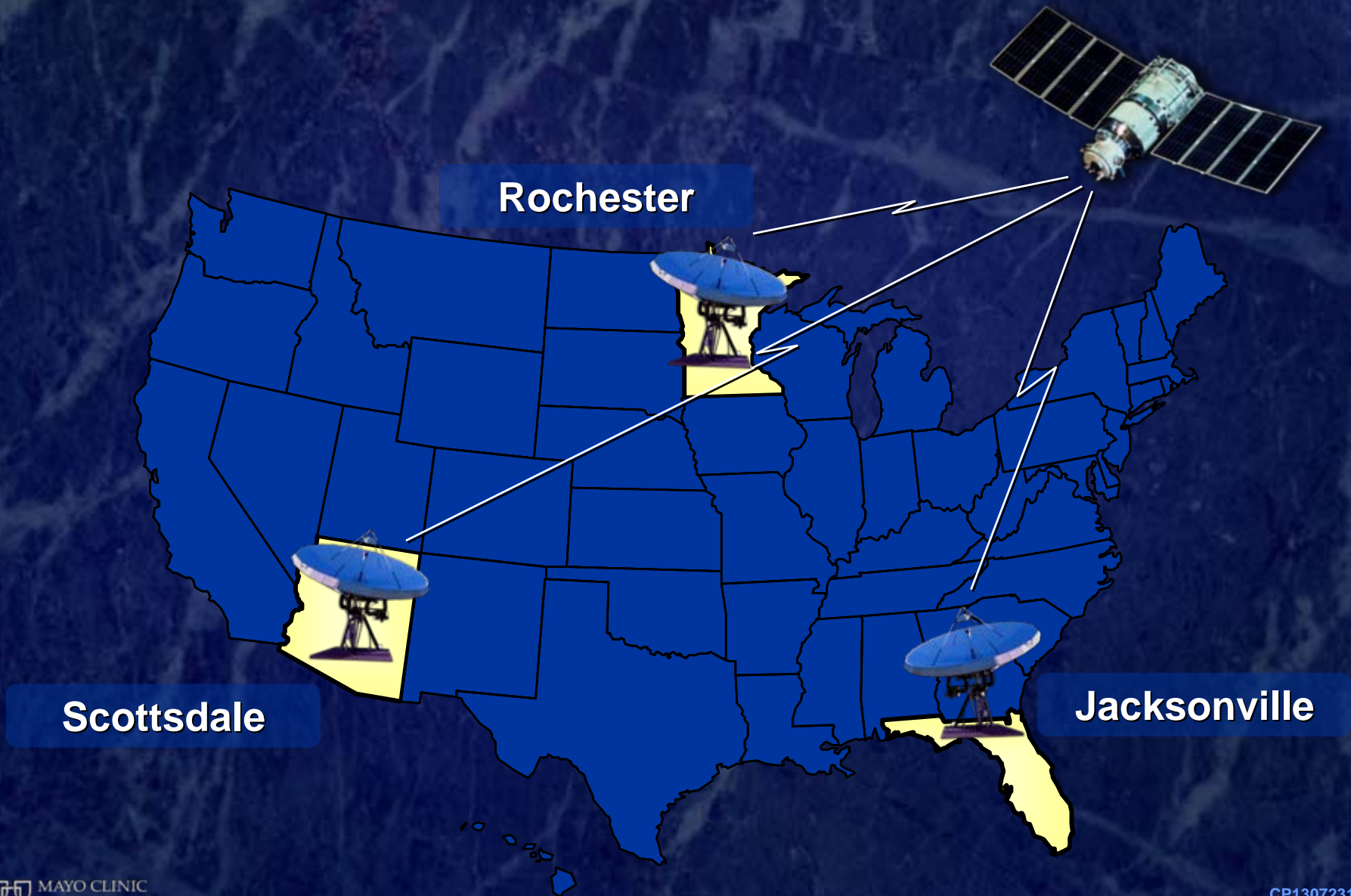
Challenges of Two Sites

- **Separate but similar operations at both sites**
- **Distance: 1500 miles apart**
- **Communication issues**
- **Sharing materials and data**

Solutions

- **Distance**
 - Videocommunication system
 - Intra-institutional travel (supported by Mayo)
- **Communications**
 - Video
 - Paging system
 - Email
- **Sharing**
 - Single database accessible at both sites
 - Courier system

Mayo Video Communications System



Videoconference System

- **Weekly scientific seminars**
- **Biweekly clinical pathological correlation conferences**
- **Biweekly data management meetings**
- **Monthly Internal Steering Committee meetings**
- **Quarterly Clinical Core consensus conferences**

Pilot Project Process

- Request for Proposals
- Receive 10-15 applications each year
- External and Internal reviews
- 2-4 applications funded each year

Research Project Selection

- **Solicited letters of intent 2007**
- **Brief presentations to Internal Steering Committee**
- **Projects selected**
 - Consistent with ADRC themes**
 - Best science**
 - Junior investigators**

Research Unique to Mayo



Thanks