

Education Core NIA Update

Nina Silverberg, PhD

October 9, 2009



Thanks Jim!

Welcome Wisconsin ADRC



**Wisconsin Alzheimer's Disease Research Center**

[EMPLOYMENT OPPORTUNITIES](#) [W-ADRC STAFF](#) [W-ADRC FACULTY](#) [CONTACT](#)



Welcome to the home of the Wisconsin Alzheimer's Disease Research Center.

[GETTING INVOLVED](#) [DONATE](#) [FAQ](#) [COMMUNITY EVENTS](#) [NEWS & RESOURCES](#) [RESEARCH IN DEPTH](#) [FOR RESEARCHERS](#) [UW. DEPT. OF MEDICINE](#)

Our Focus . . .

- ▶ Identifying new treatment strategies for Alzheimer's disease
- ▶ Investigating the processes which occur in the brain, compared to normal aging
- ▶ Inspiring hope for the future by looking for effective prevention strategies



Sanjay Asthana, MD, FRCP(C)
Head, Section of Geriatrics and Gerontology
Director of the Geriatric Research, Education and Clinical Center
Director of the Wisconsin Alzheimer's Disease Research Center
Associate Director of the Wisconsin Alzheimer's Institute

Welcome to the Wisconsin Alzheimer's Disease Research Center (formerly the Wisconsin Comprehensive Memory Program) of the University of Wisconsin School of Medicine, and the Geriatric Research, Education and Clinic Center (GRECC) of the Madison VA Medical Center. I am delighted for your interest in our program and strongly believe that your participation in our research is important for the advancement of science and society at large. We are pioneering the field of memory research at UW, and there are multiple studies being conducted that are examining potential treatments for Alzheimer's disease and other types of memory problems such as Mild Cognitive Impairment. In addition, there are studies investigating how to prevent memory





Alzheimer's & Dementia 5 (2009) 130–132

Alzheimer's
&
Dementia

Commentary on “A roadmap for the prevention of dementia II. Leon Thal Symposium 2008.” Alzheimer's disease translational research programs at the National Institute on Aging

Suzana Petanceska, Laurie Ryan, Nina Silverberg, Neil Buckholtz*

Division of Neuroscience, National Institute on Aging, National Institutes of Health, Bethesda, MD, USA



THE ALZHEIMER'S PROJECT

[Home](#)[About the Project](#)[Watch the Films](#)[Alzheimer's Basics](#)[Hope in Science](#)[National Impact](#)[Get Help](#)[Get Involved](#)[The Memory Loss Tapes](#)[Grandpa, Do You Know Who I Am? with Maria Shriver](#)[Momentum in Science](#)[Caregivers](#)[The Supplementary Series](#)[Glossary](#)

WATCH THE FILMS



THE MEMORY LOSS TAPES

Directed and Produced by Shari Cookson and Nick Doob

This verité documentary profiles seven people living with the disease, each in an advancing state of dementia across the full spectrum of the progression of the disease.

[Stream It Now >](#)

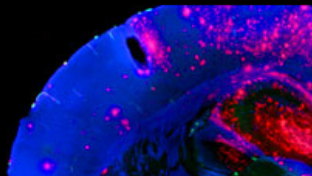


GRANDPA, DO YOU KNOW WHO I AM? WITH MARIA SHRIVER

Directed and Produced by Eamon Harrington and John Watkin; based on the book "What's Happening to Grandpa?" by Maria Shriver

This film tells five stories of children, ages 6-15, who are coping with grandfathers or grandmothers who have Alzheimer's disease.

[Stream It Now >](#)



MOMENTUM IN SCIENCE PARTS 1 & 2

This two-hour, two-part documentary takes viewers inside the laboratories and clinics of 25 leading scientists and physicians, revealing some of the most cutting-edge research advances.

[Stream It Now >](#)

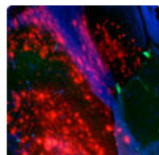


CAREGIVERS

Directed by Bill Couturié; Producers: Anne Sandkuhler and Bill Couturié

Caregivers is a collection of five portraits, each of which highlights the sacrifices and successes of people experiencing their loved one's gradual descent into dementia.

[Stream It Now >](#)



MOMENTUM IN SCIENCE: THE SUPPLEMENTARY SERIES

As part of THE ALZHEIMER'S PROJECT, 15 supplemental films provide an in-depth look into the scientific advances being made in research and



VIDEO GLOSSARY

Our glossary is a tool to help you learn more about the technical and specialized terms from the films. Read simple explanations, watch videos and much more—all at your own pace.

Alzheimer's Disease: Facing the Facts



*Airing on PBS Affiliates
Starting January 2009*

watch a video clip

the people of the show

local listing information



order the DVD



Alzheimer's disease means progressive, relentless, and ultimately fatal brain failure. It ravages a person's memory and identity and can cripple families left as caregivers. Today more than 5 million Americans have the disease, but those numbers are about to rise dramatically. As the Baby Boom generation grows older and more individuals than ever reach the age of risk, a frightening public health crisis looms.

But has anyone noticed? In comparison to cancer, heart disease and AIDS, Alzheimer's disease greatly lags in research funding, media attention, and celebrity activism.

Narrated by Tony and Emmy award-winning actor Edward Herrmann, **Alzheimer's Disease: Facing the Facts** is a new one-hour documentary that examines the personal and societal implications of the illness, and the latest research. Through profiles of families living with Alzheimer's and interviews with doctors and investigators on the front lines, the documentary shows how this overlooked disease threatens to crush America's health care system, and spirit.



ROCK S.O.S.

**SIGN THE
ROCK S.O.S.
DECLARATION
TODAY!**

A star-powered line-up joined the Rock S.O.S. campaign to honor the Doctors and Researchers who are saving our lives, to make science rock as a career choice for the next generation, and to raise their platinum voices in demand for future research funding.

CLICK HERE TO
SIGN NOW

ROCK STARS OF SCIENCE

brought to you by Geoffrey Beene Gives Back®

THE MISSION

THE ROCK STARS

THE SCIENTISTS

NOMINATE YOUR "ROCK STAR"

THE PHOTO SHOOT

GEOFFREY BEENE NEWS

THE SCIENTISTS

David B. Agus, M.D.

Francis S. Collins,
M.D., Ph.D.

Jeffrey Cummings,
M.D.

Steven T. DeKosky,
M.D.

Anthony S. Fauci, M.D.

Sam Gandy, M.D.,
Ph.D.

🏠 Ron Petersen, M.D.

Dale Schenk, Ph.D.

Rudy Tanzi, Ph.D.

Eric J. Topol, M.D.

Harold Varmus, M.D.

What They're Wearing



PHOTO CREDIT: BEN WATTS

RON PETERSEN, M.D.

CORA KANOW PROFESSOR OF ALZHEIMER'S DISEASE RESEARCH
DIRECTOR, MAYO ALZHEIMER'S DISEASE RESEARCH CENTER, MAYO
CLINIC COLLEGE OF MEDICINE

A clinician, investigator, educator on Alzheimer's disease

Ron Petersen is currently conducting a multidisciplinary study of various aspects of aging, mild cognitive impairment and Alzheimer's disease. The research is designed to develop models for predicting a subsequent cognitive impairment in normal elderly persons, potentially to guide early treatment. Dr. Petersen was Ronald Reagan's personal physician and treated the former President's Alzheimer's. Dr. Petersen is one of the recipients of the 2004 MetLife Award for Medical Research in Alzheimer's Disease and the 2005 Potamkin Prize for Research in Picks, Alzheimer's, and Related Disorders of the American Academy of Neurology.

SELF-EXAMINATION

Occupation:

Neurologist, clinical research scientist.

Alternative career choice:

Teacher.

I tend to approach life with a sense of:

Anticipation and hope for the future.

My mentor is/was:

There were many—Marsel Mesulam, Emre Kokmen, Bahram Mokri, Len Kurland...

SHARE



GEOFFREY BEENE



GIVES BACK®

www.geoffreybeene.com



VIDEO



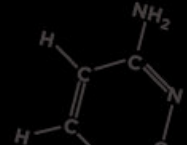
PETERSEN: AGE 40
ON-BEWARE



PETERSEN: BENCH N'
BEDSIDE



PETERSEN: KUDOS TO
WILL I AM



Interested in
aging and health
disparities?

Join us!

National Institute on Aging



The **Health Disparities Resource Persons Network**
is a network of science professionals who work to
improve the health of all older Americans.

The network is:

- ♦ An online community of researchers who focus on diverse older populations
- ♦ A resource for community organizations, early-career scientists, and institutions
- ♦ A guide to recruit minorities, women, and underserved populations
- ♦ A program of the National Institute on Aging

The ***Health Disparities Resource Persons Network***. Get in touch. Make a difference.

For more information, visit www.nia.nih.gov/ResearchInformation/HDToolbox and click on "Health Disparities Resource Persons Network" or contact Cerise Elliott, PhD (elliottce@nia.nih.gov or 301-496-9350).

National Institute
on Aging

Health Disparities Resource Persons Network

search...

HOME
HEALTH DISPARITIES TOOLBOX

MAIN MENU

- Home
- About the HDRPN
- HDRPN Search

LOGIN

Username

Password

☐ Remember me

Login

[Lost Password?](#)

[Want to Join the Network?](#)

HEALTH DISPARITIES RESOURCE PERSONS NETWORK

Welcome to the Health Disparities Resource Persons Network (HDRPN). Here you can connect with scientists dedicated to improving the health of millions of older Americans experiencing health disparities.

Featured Network Member

Peggye Dilworth-Anderson is Professor of Health Policy and Management, Gillings School of Global Public Health and Associate Director of Aging & Diversity/Institute on Aging (IOA) at the University of North Carolina at Chapel Hill. Her areas of expertise include minority aging and health, family caregiving, and health disparities. Her current research focuses on health disparities pertaining to Alzheimer's disease and related dementias. Her research has been funded by the National Institute on Aging, Administration on Aging, GlaxoSmithKline Community Partnership Program, National Alzheimer's Association, and the March of Dimes. In addition to her research being published and cited in professional journals, her work is also cited in the print media such as the New York Times, USA Today, and local newspapers. Dr. Dilworth-Anderson serves in a number of leadership roles in the field of aging. She is President-elect of the Gerontological Society of America, a member of the National Institute on Aging (NIA) Advisory Council (2007-2010), a member of the board of directors of the National Alzheimer's Association, and on the editorial board of three professional journals that address aging issues. Dr. Dilworth-Anderson completed her undergraduate training in sociology from Tuskegee Institute, and received her master's and doctorate degrees in sociology from Northwestern University in 1972 and 1975, respectively. She received post-doctoral training from the Midwest Council on Social Research in aging research with additional training at Harvard Geriatric Education Center. She is a Fellow of the Gerontological Society and the National Council of Family Relations. Her current professional affiliations include the Gerontological Society of America, National Council on Family Relations, American Sociological Association, and the American Public Health Association.



Accessibility
Disclaimer
Policies
FOIA
Contact Us





<http://www.nia.nih.gov/ResearchInformation/HDToolbox.htm>

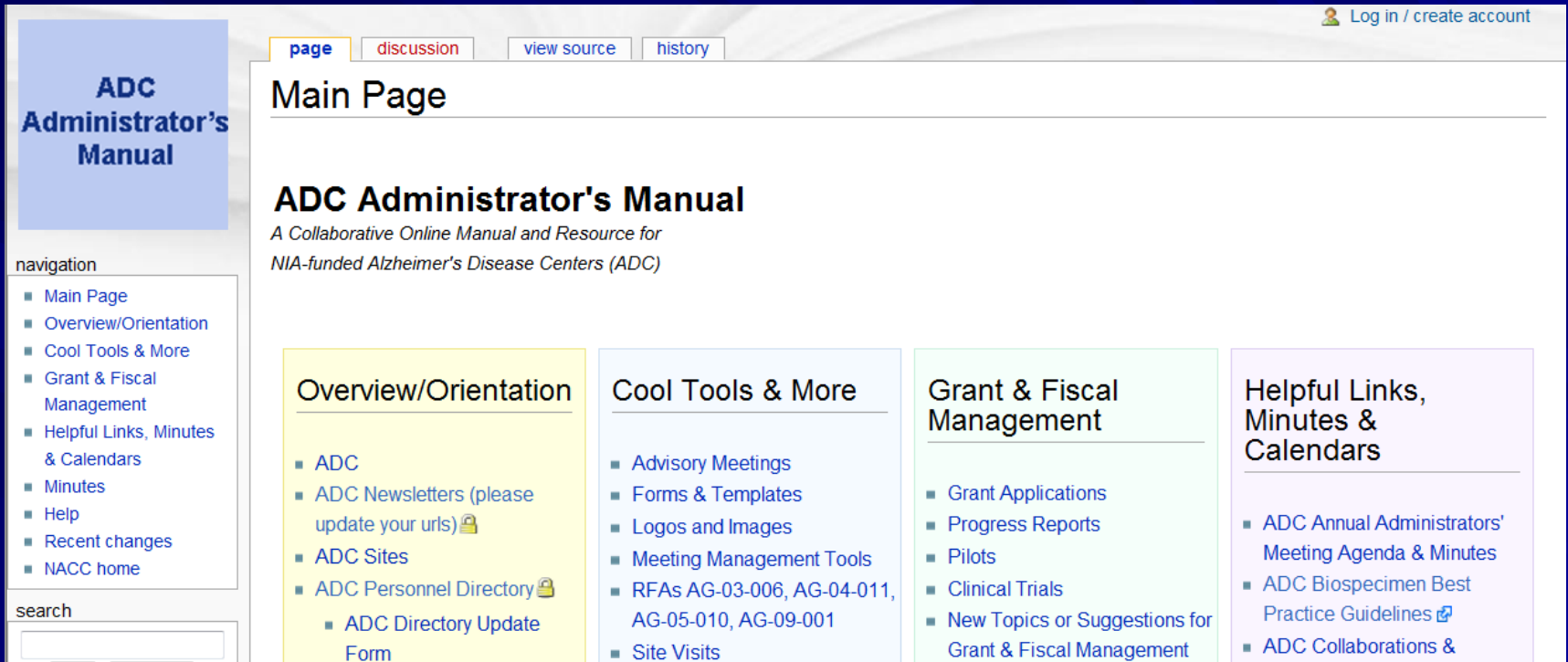
Diversity related funding opportunities

- <http://www.nia.nih.gov/GrantsAndTraining/SpecialPopulations.htm>
 - Dissertation awards
 - Diversity Supplements
- <http://grants.nih.gov/grants/guide/pa-files/PAR-09-136.html> - Promoting Careers in Aging and Health Disparities Research (K01)

Reasons for Diversity Reporting in Progress Reports

1. We get requests for information
 - From NIH, NIA, NACA, White House, Congress, media
 - Sometimes need summary of all centers, sometimes need highlights, examples
2. Helps us to inform partners/collaborators (advocacy groups, professional associations, etc.) about work that supports our common mission, goals and objectives
3. We get information about available funds
 - If we know your successes and barriers, it's easier for us to coordinate information flow
4. This information is useful to have for your competing renewals

ADC Administrators Wiki



The screenshot shows the main page of the ADC Administrators Wiki. At the top right, there is a user login/registration link. Below this, a navigation bar contains tabs for 'page', 'discussion', 'view source', and 'history'. The main heading is 'Main Page'. Below the heading, the title 'ADC Administrator's Manual' is displayed, followed by a subtitle: 'A Collaborative Online Manual and Resource for NIA-funded Alzheimer's Disease Centers (ADC)'. On the left side, there is a sidebar with a blue header 'ADC Administrator's Manual' and a 'navigation' section listing various links. Below the navigation section is a 'search' box. The main content area is divided into four colored boxes: 'Overview/Orientation' (yellow), 'Cool Tools & More' (light blue), 'Grant & Fiscal Management' (light green), and 'Helpful Links, Minutes & Calendars' (light purple). Each box contains a list of links related to its category.

Log in / create account

page discussion view source history

Main Page

ADC Administrator's Manual

*A Collaborative Online Manual and Resource for
NIA-funded Alzheimer's Disease Centers (ADC)*

navigation

- Main Page
- Overview/Orientation
- Cool Tools & More
- Grant & Fiscal Management
- Helpful Links, Minutes & Calendars
- Minutes
- Help
- Recent changes
- NACC home

search

Overview/Orientation

- ADC
- ADC Newsletters (please update your urls) 📧
- ADC Sites
- ADC Personnel Directory 📧
 - ADC Directory Update Form

Cool Tools & More

- Advisory Meetings
- Forms & Templates
- Logos and Images
- Meeting Management Tools
- RFAs AG-03-006, AG-04-011, AG-05-010, AG-09-001
- Site Visits

Grant & Fiscal Management

- Grant Applications
- Progress Reports
- Pilots
- Clinical Trials
- New Topics or Suggestions for Grant & Fiscal Management

Helpful Links, Minutes & Calendars

- ADC Annual Administrators' Meeting Agenda & Minutes
- ADC Biospecimen Best Practice Guidelines 📄
- ADC Collaborations &

http://depts.washington.edu/naccmail/mediawiki/index.php?title=Main_Page