



# **ADCs, NCRAD, and ADGC: Update**

**Tatiana Foroud, PhD**

**Thomas Montine, MD, PhD**

**Gerard Schellenberg, PhD**

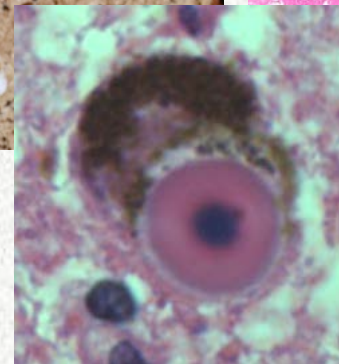
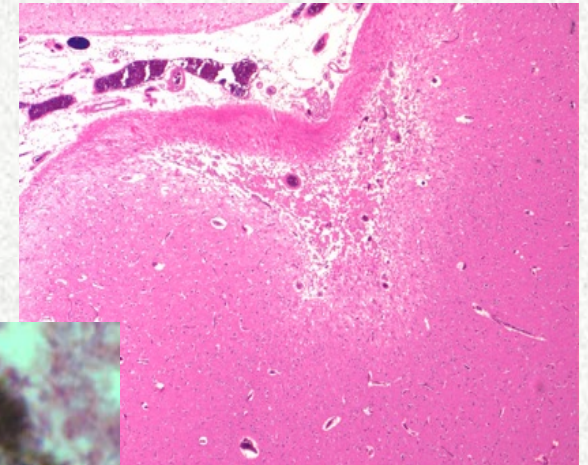
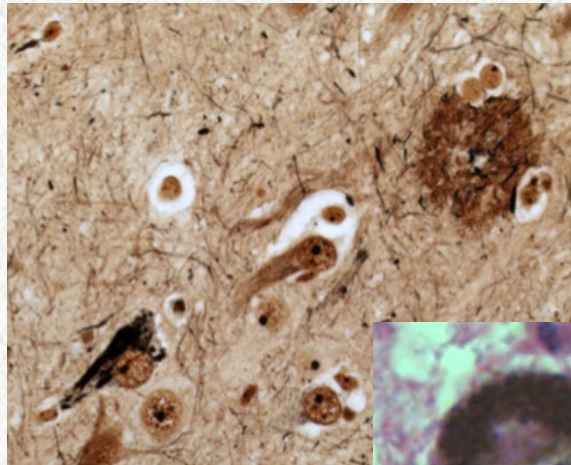
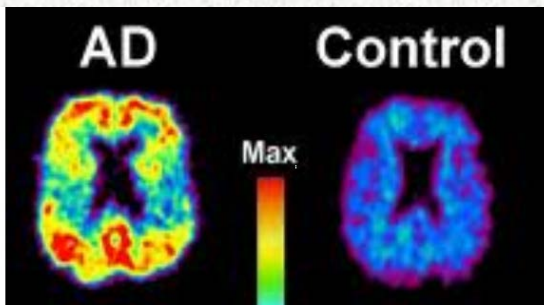
# ADCs

- **Clin-Path eligibility defined by committee**
- **ADC ( $\approx$  1800)**
  - **> 95% eligible samples/DNA to NCRAD**
  - **NP Data already in NACC (very easy)**
- **Non-ADC ( $\approx$  1900)**
  - **By invitation from ADGC**
  - **Samples/DNA to NCRAD**
  - **NP Data not in NACC (very messy)**

**Co-chairs:** Drs. Reiman  
and Montine

**Members:** Drs. Dickson,  
Frosch, Ghetti,  
Hyman, Schneider,  
and Trojanowski

- **Disease phenotype is complex**
  - Injury
  - Reaction to Injury
  - Attempted Repair
  - Consumption of Reserve
  - Functional Compensation
- **Endophenotypes**



**NCRAD**

**ADGC**