



Original 10 ADRCs

1984

Mass General (J Growdon)

Mt Sinai Med Ctr (K Davis)

Johns Hopkins (D Price)

Univ Southern California (C Finch)

Univ California, San Diego (R Katzman)

1985

Duke (A Roses)

Kentucky (W Markesbery)

Pittsburgh (F Boller)

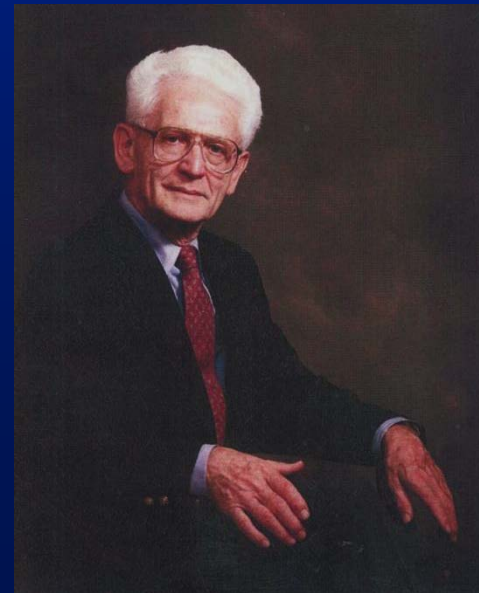
Univ Washington (G Martin)

Wash U (L Berg)

NIA: Z Khachaturian

Consortium to Establish a Registry for Alzheimer's Disease (CERAD)

- Established in 1986, as part of the NIA's Alzheimer's Disease Patient Registry program (NIA: Z Khachaturian)
- Mandate: develop standardized, reliable, and valid assessments for AD
- Principal Investigator:
Al Heyman, MD
(Duke University)



CERAD Clinical Centers and Directors

Clinical Centers

Baylor Univ. Coll. of Med.
Burke Rehab. Ctr., Cornell
Columbia Univ./Presby. Hosp.
Duke Univ. Medical Center
Emory Univ. School of Med.
Johns Hopkins Medical Center
Massachusetts General Hosp.
Mt. Sinai Medical Center
University Hospitals
Univ. Alabama Hosps.
Univ. California
Univ. Iowa
Univ. Kentucky
Univ. Pittsburgh
Univ. Rochester
Univ. Southern California
Southwestern Medical Center
Univ. Washington
Veterans Admin. Hosp.
Washington University

LOCATION

Houston, TX
White Plains, NY
New York City
Durham, NC
Atlanta, GA
Baltimore, MD
Boston, MA
New York City
Cleveland, OH
Birmingham, AL
San Diego, CA
Iowa City, IO
Lexington, KY
Pittsburgh, PA
Rochester, NY
Los Angeles, CA
Dallas, TX
Seattle, WA
Minneapolis, MN
St. Louis, MO

CERAD Director

Warren Strittmatter, MD
John Blass, MD, PhD
Richard Mayeux, MD
Chris Clark, MD
Herbert Karp, MD
Barry Rovner, MD
John Growdon, MD
Richard Mohs, PhD
Mario Mendez, MD
Lindy Harrell, PhD, MD
W.C. Wiederholt, MD
Antonio Damasio, MD, PhD
Steven DeKosky, MD
Jacob Huff, MD
Pierre Tariot, MD
Victor Henderson, MD
Myron Weiner, MD
Eric Larson, MD
James Mortimer, PhD
John Morris, MD

CERAD Accomplishments (1986-1997)

- Clinical, neuropsychological, and neuropathological assessments, translated into 13 languages
- Morris JC, Heyman A, Mohs R, Hughes JP, van Belle G, Mellits ED, Clark C. The Consortium to Establish a Registry for Alzheimer's Disease (CERAD). Part I: Clinical and neuropsychological assessment of Alzheimer's disease. *Neurology* 1989; 39:1159-1165.



CERAD Acceptance Letter

Neurology

OFFICIAL JOURNAL OF THE AMERICAN ACADEMY OF NEUROLOGY

Robert B. Daroff, M.D.
Editor-in-Chief
Case Western Reserve University School of Medicine
University Hospitals of Cleveland
Cleveland, Ohio 44106

March 17, 1989

Dr. John C. Morris
Department of Neurology, Box 8111
Washington University School of Medicine
660 South Euclid
St. Louis, MO 63110

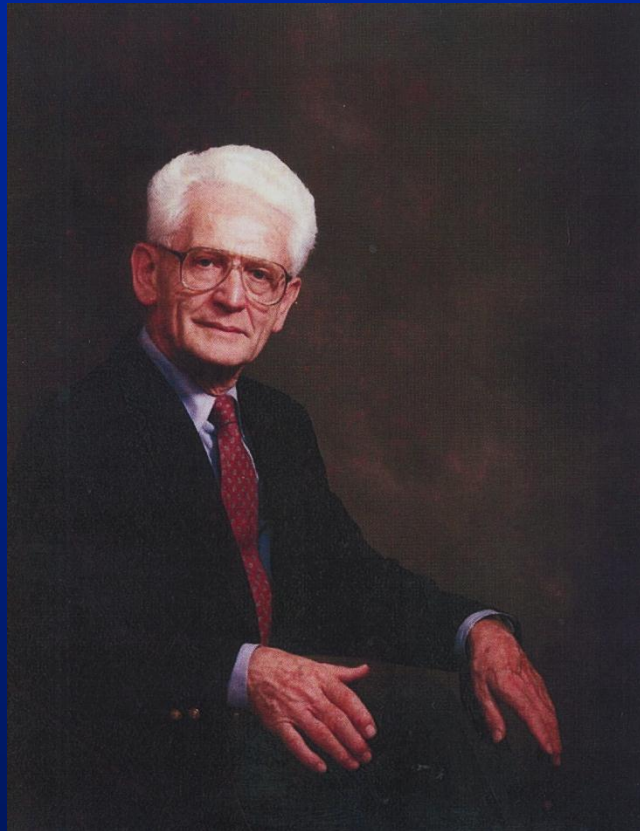
Re: Manuscript #240/89

Dear John:

Since every major center seems to be represented, and those which aren't hate you for excluding them, I've decided to accept your paper without sending it out for review.

CERAD Accomplishments (cont.)

- Longitudinal data obtained on 1,094 persons with AD dementia and 463 cognitively normal controls from 24 university centers
- The Minimum Data Set for ADCs (NIA: C Phelps)
 - Cronin-Stubbs D, DeKosky ST, Morris JC, Evans DA. Promoting interactions with basic scientists and clinicians: The NIA Alzheimer's Disease Data Coordinating Center. *Statistics in Medicine* 2000; 19:1453-1461
 - Coordinating Center at Univ Washington (W Kukull, Director)
- The MDS evolved into the National Alzheimer's Coordinating Center (NACC), the Uniform Data Set (UDS), and who knows what is yet to come?



Al Heyman, MD
1916 – 2012



Chris Clark, MD
1946 – 2012