

# ADEAR Update

October 2014

**Jennifer Watson, MA**

Project Officer, ADEAR Center

NIA Office of Communications & Public Liaison



National Institute on Aging



National Institute on Aging

## NIA/ADEAR Update – October 2014



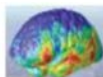
### New Web Resources, Publications from ADEAR



#### New Recruitment Booklet Participating in Alzheimer's Research - For Yourself and Future Generations

20-page booklet covers the basics of participating in trials and studies  
• Call ADEAR or order online!  
• Bulk copies available

Register  
now for  
2015 AD  
Summit



Join leading Alzheimer's researchers to discuss priorities at the upcoming second AD Summit at NIH, Bethesda, MD February 9-10, 2015

[www.nia.nih.gov/alzheimers-disease-research-summit-2015-registration](http://www.nia.nih.gov/alzheimers-disease-research-summit-2015-registration)

### Recruiting Older Adults Into Research (ROAR) toolkit available



The ROAR Toolkit, developed by ACL, NIH, and CDC to encourage older adult participation in research, includes:

- User Guide, FAQs, and social media messages
- Slides: "Healthy Aging & Participating in Research" (long and short versions), with speaker's notes
- Customizable flyers

[www.nia.nih.gov/health/publication/roar-toolkit](http://www.nia.nih.gov/health/publication/roar-toolkit)

### Check out Brain Health Resource



The Brain Health Resource presentation toolkit offers current, evidence-based information and resources written in plain language. Developed by ACL, CDC, and NIH, it includes:

- Slides: "Brain Health As You Age: You Can Make Difference!"
- Educator Guide
- One-page supplementary resource list handout

[www.nia.nih.gov/health/publication/brain-health-resource](http://www.nia.nih.gov/health/publication/brain-health-resource)



### Quick Guide on cognitive assessment for physicians

This brief overview offers tips and resources for primary care clinicians to assess cognitive impairment in their older patients. Available at:

[www.nia.nih.gov/alzheimers/physician-education](http://www.nia.nih.gov/alzheimers/physician-education)

For a searchable database of instruments to detect cognitive impairment in older adults:

[www.nia.nih.gov/research/cognitive-instrument](http://www.nia.nih.gov/research/cognitive-instrument)

### Access Popular Webinar Series

Checkout the 3-part 2014 ACL/CDC/NIA Webinar Series on Alzheimer's Disease and Related Dementias at [www.acl.org/soa/soa/soa...Programs/Alz/Alz\\_GrantsIndex.aspx#resources](http://www.acl.org/soa/soa/soa...Programs/Alz/Alz_GrantsIndex.aspx#resources)

New this year: CEUs are available:

- Webinar #1: Updates on Alzheimer's Disease and Related Dementias Resources
- Webinar #2: Community Collaborations for Assisting People with Alzheimer's and Dementias
- Webinar #3: Alzheimer's Research Updates

Order Publications Online  
[www.nia.nih.gov/health/publication](http://www.nia.nih.gov/health/publication)

Bulk copies available!

Call ADEAR  
1-800-438-4380

# Check Out the Handout

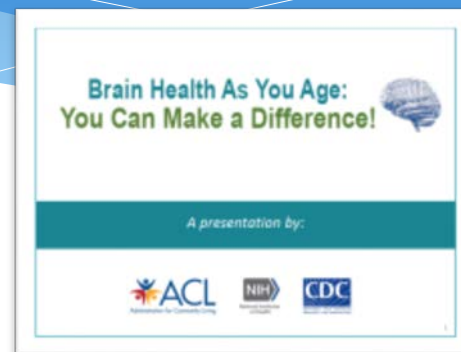
NEW!

# Participating in Alzheimer's Research: For Yourself & Future Generations



# Presentation Toolkits

- \* **Brain Health Resource**
- \* **Recruiting Older Adults into Research (ROAR)**
- \* **Talking with Your Doctor**



# New Clinician Resources

**ALZHEIMER'S DISEASE EDUCATION AND REFERRAL CENTER**

Home About Alzheimer's Find Help Research Federal Initiatives About ADEAR

## Assessing Cognitive Impairment in Older Adults: A Quick Guide for Primary Care Physicians

**Why is it important to assess cognitive impairment in older adults?**

**Benefits of early screening**

**When is screening indicated?**

**How can physicians and staff find time for screening?**

**How is cognitive impairment evaluated?**

**Points to remember**

**Resources**

**References**

**More information about Alzheimer's and dementia**

Share this:

As a primary care practice, you and your staff are often the first to address a patient's complaints—or a family's concerns—about memory loss or possible dementia.<sup>1,2</sup> This quick guide provides information about assessing cognitive impairment in older adults.

With this information, you can identify emerging cognitive deficits and possible causes, following up

## Assessing Cognitive Impairment in Older Adults: A Quick Guide for Primary Care Physicians

U.S. Department of Health and Human Services Alzheimer's Disease Education and Referral Center Publications Text Release

**NIH** National Institute on Aging  
Turning Discovery Into Health

Home Health and Aging Research and Funding Newsroom About NIA Contact Us

Home » Research

## RESEARCH & FUNDING

### Instruments to Detect Cognitive Impairment in Older Adults

**Search Options**

Show all Instruments in Database

**Instrument Name**

**Instrument Name Abbreviation**

Submit New Search

**Filtered Search**

The following criteria can be used to help narrow your search results. To select more than one option within each variable, click the checkbox next to each applicable option.

Clinicians and researchers can use this searchable database to identify published instruments for use in their outpatient practice or community studies. The database, which contains information about 116 instruments, was created by staff at the National Institute on Aging.

For more information, contact:  
**Samir Sauma, Ph.D., M.P.H.**  
National Institute on Aging, NIH

## Cognitive Instruments Database





# Are You Connected?

- \* E-Alerts:
  - \* Alzheimer's news updates, Connections
  - \* Spotlight on Aging Research
  - \* ADEAR Tweets
- \* Inside NIA Blog
- \* Twitter: @Alzheimers\_NIH

More information and  
subscribe at:

**[www.nia.nih.gov/contact/  
stay-connected](http://www.nia.nih.gov/contact/stay-connected)**

# Contact Us!

**Jennifer Watson, NIA ADEAR Project Officer**

301/496-1752 [watsonjl@nia.nih.gov](mailto:watsonjl@nia.nih.gov)

**Peggy Vaughn, NIA Press/Communications Contact**

301/496-1752 [Peggy.Vaughn@nih.gov](mailto:Peggy.Vaughn@nih.gov)

**David Burton, ADEAR Project Director**

240/645-4155 [David.Burton@nih.gov](mailto:David.Burton@nih.gov)

**ADEAR Center: 1-800-438-4380**