



Administrator Update

Krista L. Moulder, PhD

Associate Executive Director, Knight ADRC

KnightADRC | WASHINGTON
Alzheimer's Disease Research Center UNIVERSITY
ST. LOUIS



 *Thank You!!*

- Dr. Raj Shah and Ms. Annie Barz
- ORE Core Steering Committee
- All contributing ADC administrators

Overview

- What are the key issues that Administrators are facing and trying to address?
- How are Administrators trying to support the efforts of the ORE Cores?
- What are key areas in which Administrators would like more collaboration with the ORE Core Leaders?

What Are Those Administrators Doing Anyway?

- #1 Answer:

- Challenges

- NIA funds do not cover what ADCs want/need to do
 - » Biomarker studies are expensive
 - » Desire to supplement prior funds
- Unexpected needs of Cores/Projects

- Actions

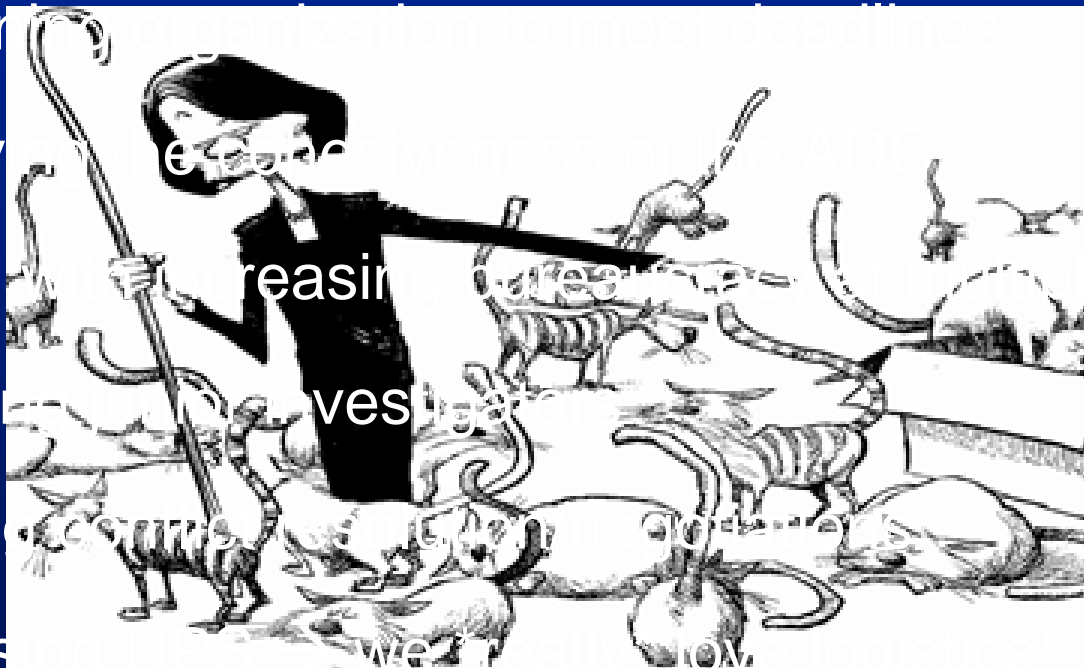
- Soliciting/building grants
- Identifying industry collaborations (plus contracting)



What Are Those Administrators Doing Anyway?

- #2 Answer:

- Maintaining
- Preserving
- Dealing with increasing budget levels
- Mentoring
- Handling
- Surpassing



What Are Those Administrators Doing Anyway?

- #3 Answer: We are the ones who handle the “grab-bag” items



What Are Those Administrators Doing Anyway?

- #3 Answer: We are the ones who handle the “grab-bag” items



Overview

- What are the key issues that Administrators are facing and trying to address?
- How are Administrators trying to support the efforts of the ORE Cores?
- What are key areas in which Administrators would like more collaboration with the ORE Core Leaders?

Admin Core Support of ORE Cores

- Assist with obtaining funds and associated contracting/finances
 - Help to prioritize needs/demands
 - Facilitate funding of ORE Core Innovation
- Attend/support/speak at ORE Core events
- Assist with development of educational materials
- Monitor burden: is the “ask” appropriate for the ORE Core?

Overview

- What are the key issues that Administrators are facing and trying to address?
- How are Administrators trying to support the efforts of the ORE Cores?
- What are key areas in which Administrators would like more collaboration with the ORE Core Leaders?

Admin and ORE Core Areas of Collaboration

- Develop recruitment/outreach goals with the Clinical Core
 - Planning for under-represented groups
 - Considering burden for all involved
 - Incorporating technology in recruitment/outreach
 - Including clinical trial needs
- Plan (actively) for retention
- Identify funding opportunities for the ORE Core
 - Including community funding and in-kind contributions

Kudos for the ORE Cores!

“We collaborate very closely with the ORE Core.”

“The ORE Core is well-integrated into our ADC.”

“We have a wonderful ORE Core Leader!”

“We routinely meet with our ORE Core Leader to discuss ways to enhance the work being done at our ADC.”