

# Pepper Centers: REC at the Johns Hopkins OAIC

Karen Bandeen-Roche

ADC Outreach-Recruitment-Education Meeting

October 14, 2016



JOHNS HOPKINS  
BLOOMBERG SCHOOL  
of PUBLIC HEALTH

# Older Americans Independence Centers Program

- The goal of the OAIC program is to increase scientific knowledge that allows older adults to maintain or restore their independence.



15 centers

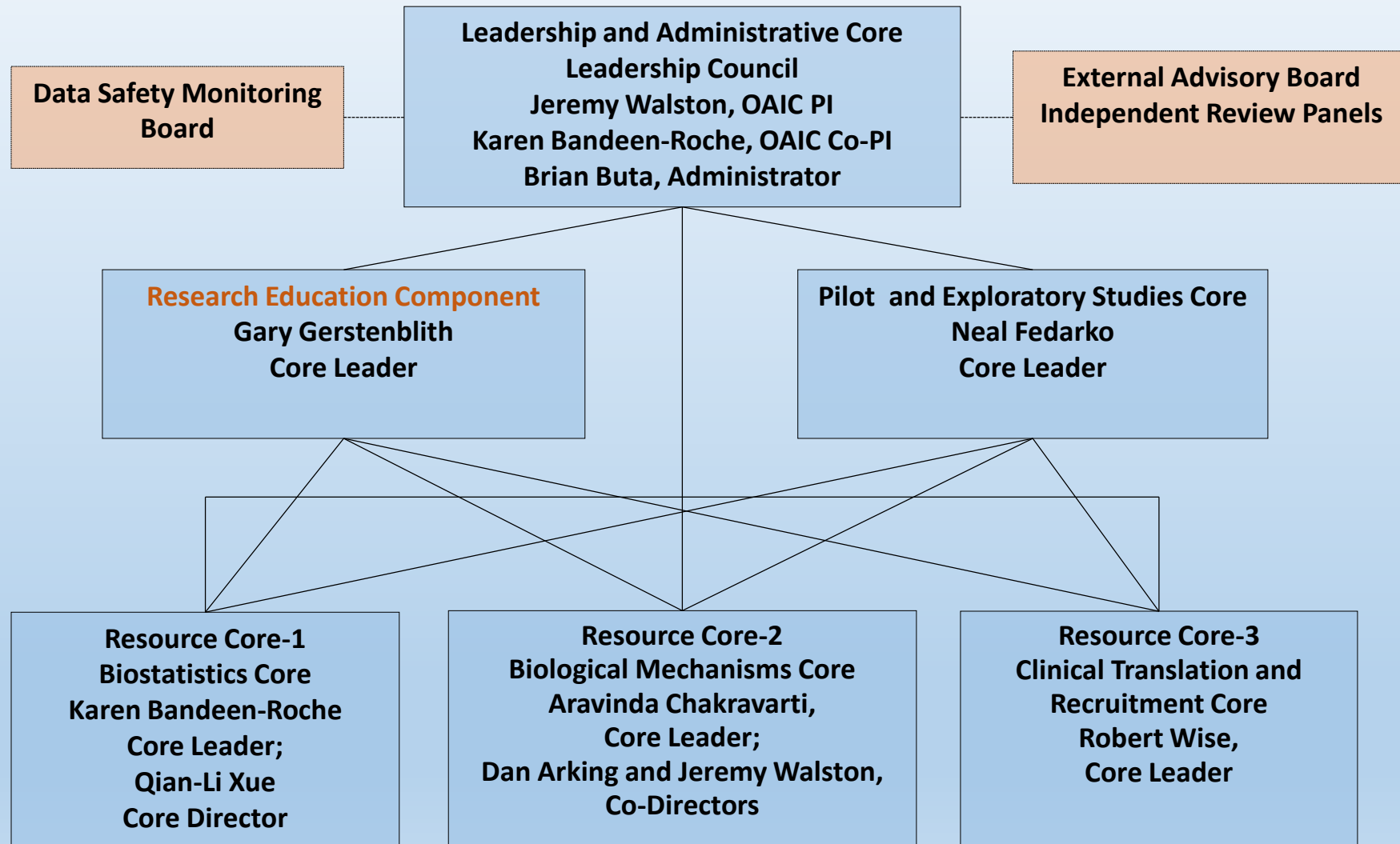
# Older Americans Independence Centers

- Provide intellectual leadership and innovation in a **thematic area**
  - **Physical frailty**
    - Disability in vulnerable populations
    - Pathways of functional decline
    - Multifactorial geriatric health conditions
    - Translational science in aging
    - Caregiving / end of life issues
  - **Physical**

# Older Americans Independence Centers

- Provide intellectual leadership and innovation in a thematic area;
- Facilitate and develop novel **multidisciplinary** and interdisciplinary research strategies;
- Stimulate incorporation of emerging **technologies, methods** and scientific advances into research designs as appropriate;
- **Provide research education for future leaders in geriatric research;**
- Stimulate **translation** between basic and clinical research;
- Promote **translation** of clinical research findings into practice in relevant healthcare settings;
- **Collaborate** substantially with other OAICs on multi-center projects;
- Interface where possible with other NIA-funded programs and centers; e.g., [Resource Centers for Minority Aging Research \(RCMARs\)](#), [Centers on the Demography and Economics of Aging](#), [Roybal Centers](#), [Alzheimer's Disease Centers \(ADCs\)](#), [Nathan Shock Centers](#);
- Serve as a source of **advice and collaboration** to other investigators.

# Johns Hopkins OAIC Organization Chart



Not shown: Information Dissemination Core

# Research Education Component

- Education
- Mentorship
- Research experiences
- Networking
- i.e., Career development award
- Up to \$450K first-year direct costs (within \$800K direct per year total)

# JHU OAIC Research Education Component

(formerly known as the Research Career Development Core)

- Mission

- Increase the **cadre of experts** dedicated to scholarship on frailty
- Provide these experts with the **training and skills** to develop, evaluate, test and eventually translate into clinical practice strategies which will enhance independence in older adults.

- Scope

- ~ 3 at a time; ~2 years each
- Effort support commensurate with engagement in a research project

# REC Elements at JHU

## 1) Scholar identification

- RFA + personal networks
- Highly interdisciplinary
- Successful at creating long-term engagement



# REC Elements at JHU

## 2) Coursework – largely at the School of Public Health

- Topics
  - Biostatistics
  - Basic Science
  - Aging
  - Clinical and translational science
- Modalities
  - Traditional courses
  - Workshops (e.g. Cold Spring Harbor)
  - Institutes / Short courses
  - Partnerships (e.g. CTSA)

# REC Elements at JHU

## 3) Research infrastructure

- Resource cores at scholars' disposal

## 4) Academic home and intellectual 'stimulus zone'

- Interdisciplinary
- Graduate students through faculty—not just REC-supported
- Activities
  - Bi-weekly “**frailty working group**”
  - Monthly “Pepper Scholars” **research in progress** forum
  - Affiliated: Center on Aging Seminars, T32 Research in Progress meetings
- Mentorship

# REC Elements at JHU

## Metrics

1. Career awards
2. Publications / presentations
3. R grants
4. Training completed
5. Networks established
6. Continued engagement