



MICHIGAN ALZHEIMER'S DISEASE CENTER

Research Education Component

Scott Roberts, PhD

Outreach, Recruitment & Education Core Leader
Michigan Alzheimer's Disease Center

REC Personnel



Roger Albin, MD
Univ. Michigan
Core Leader



Peter Lichtenberg, PhD
Wayne State Univ.
Co-Core Leader



Irving Vega, PhD
Michigan State
Co-Investigator



Ken Langa, MD, PhD
Univ. Michigan
Co-Investigator



Erin Fox, BA
Core Coordinator

REC Aims

- 1) Recruit junior investigators (junior faculty, fellows, postdocs) into dementia research from all 3 sites
- 2) Enhance junior investigators' research through experienced mentoring committees
- 3) Develop a comprehensive, interdisciplinary curriculum to educate junior investigators broadly on dementia research
- 4) Provide practical training in career skills including manuscript and grant preparation, presentation skills, leadership opportunities
- 5) Enhance diversity of investigators in dementia-related research

1st Class of Junior Investigators



Jiayu Zhou, PhD (Computer Science)

Assistant Professor, Dept. of Computer Science, Michigan State University (MSU)

“Improving predictive power of MCI using diffusion MRI-derived brain connectome”



Ben Combs, PhD (Biochemistry)

Research Assistant Professor, Department of Translational Science, MSU

“Mechanisms of tau toxicity involving disruptions of fast axonal transport”



Jessica Damoiseaux, PhD (Neuroscience)

Assistant Professor, Department of Psychology, Wayne State University

“Effect of normal and abnormal aging on brain structure and function”



Wassim Tarraf, PhD (Political Science)

Assistant Professor, Dept. of Healthcare Sciences, Wayne State University

“Cognitive function and disorders among Latinos”



HwaJung Choi, PhD (Economics)

Research Investigator, Dept. of Internal Medicine, University of Michigan

‘Assessing influence of family resources on care utilization for adults w/dementia’

Training Activities (2-year program)

- Multidisciplinary mentoring teams
 - Regularly scheduled meetings
- Grantwriting
 - MADCC/Pepper Center grantwriting retreat
 - K-award workshop, R01 boot camp via MICH-R (CTSA award)
- Scientific Presentations
 - Annual MADCC Research Symposium
 - Conference travel awards
- Networking
 - Mentee orientation meeting
 - Bimonthly Journal Club, Case Conferences



Success of 1st Mentee Class

- N = 7 grants received (4 as Principal Investigator)
 - Zhou: NSF 5-year Early Career Development Award
 - Choi: Two NIH R21 awards; one K01 award from NIA
- N = 93 papers authored (17 as 1st author)
 - Damoiseaux: *NeuroImage* (IF = 7.1)
 - Combs: *American Journal of Pathology* (IF = 4.1)
 - Choi: *Health Affairs* (IF = 4.8)
 - Tarraf: *Journal of Alzheimer's Disease* (IF = 3.5)
- N = 24 presentations across the globe



Online Curriculum: *Dementia for Scientists*

- Launched late Summer 2018 after evaluation by ADCC faculty; beta-testing, evaluation by junior investigators
- 30 video presentations across 7 modules
 - Dementia Definition & Evaluation
 - Dementia Pathology & Pathogenesis
 - Dementia Genetics
 - Dementia Imaging
 - Therapy Development in Dementias
 - Health Services & Policy Dementia Research
 - Research in Ethnically Diverse Populations



Uploads [PLAY ALL](#)

SORT BY



Cognitive and Brain Aging in Older African Americans

12 views • 1 month ago



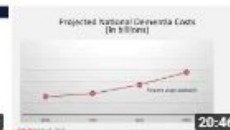
Engaging African Americans in Research: Value of a...

13 views • 1 month ago



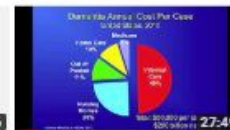
Improving Accuracy in the Use of Cognitive Testing wit...

42 views • 1 month ago



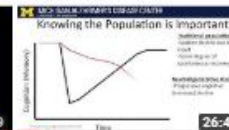
Economics Costs of Dementia

13 views • 1 month ago



International Comparisons and Trends in Dementia

42 views • 1 month ago



Non-Pharmacologic Interventions

16 views • 1 month ago



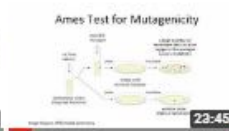
Biomarkers & Biomarker Development

17 views • 1 month ago



Clinical Trials

18 views • 1 month ago



Drug Development and FDA Review Process

18 views • 1 month ago



Pharmacologic Treatment of Dementias

47 views • 1 month ago



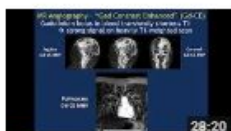
PET Imaging of Dementias

30 views • 1 month ago



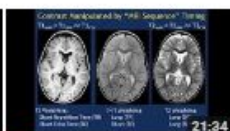
MRI Imaging of Dementias

41 views • 1 month ago



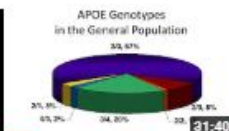
MRI Basics Part 2

29 views • 1 month ago



MRI Basics Part 1

68 views • 1 month ago



Genetic Risks and Genetics in Clinical Practice

11 views • 1 month ago



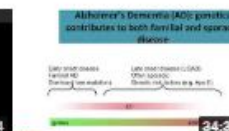
Ethical Issues in Neurogenetic Conditions

12 views • 1 month ago



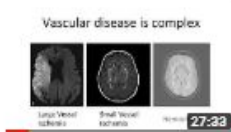
Genetics and Pathogenesis of Amyotrophic Lateral...

22 views • 1 month ago



Genetics of Alzheimer's Disease

56 views • 1 month ago



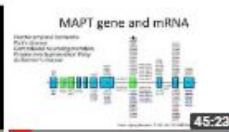
Vascular Dementias

23 views • 1 month ago



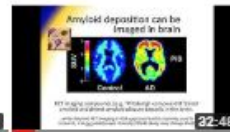
Lewy Body Dementia - Synucleinopathies &...

27 views • 1 month ago



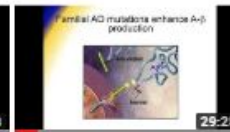
Alzheimer's Disease - Tau Biology and Pathology

39 views • 1 month ago



Alzheimer's Disease - Amyloidopathy

32 views • 1 month ago



Alzheimer's Disease - The amyloid cascade, alternativ...

31 views • 1 month ago



Pathology of Dementia, Degenerative and Spinal Co...

87 views • 1 month ago



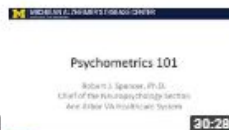
Behavioral & Psychiatric Features of Dementia Part 2

37 views • 1 month ago



Behavioral & Psychiatric Features of Dementia Part 1

51 views • 1 month ago



Psychometrics

40 views • 1 month ago



Clinical Evaluation of Dementias Part 2

32 views • 1 month ago



Clinical Evaluation of Dementias Part 1

46 views • 1 month ago



Neuropsychology of Other Dementias

54 views • 1 month ago

Curriculum Data (Sept. '18-present)

- N = 1,652 total views
- Most viewed module:
Dementia Definition & Evaluation
- Most viewed presentations:
 - *Defining Dementias: Clinical Features, Natural History*
 - *Neuropsychology Basics*
 - *Pathology of Dementia*
 - *MRI Basics*
 - *Genetics of Alzheimer's Disease*

2nd Class of Junior Investigators



DeAnnah Byrd, PhD (Public Health)

Postdoctoral Scholar, Institute of Gerontology, Wayne State University

“Individual differences in cognitive functioning among African Americans”



Julia Gerson, PhD (Neuroscience)

Postdoctoral Fellow, Department of Neurology, University of Michigan

“Regulation of neurodegenerative disease proteins by UBQLN2”



Lenette Jones, PhD, RN (Nursing)

Asst. Professor, Dept. of Health Behavior & Biological Sciences, U. Michigan

“Improving hypertension self-management in African American women”



Rohit Marawar, MD (Neurology)

Assistant Professor, Department of Neurology, Wayne State University

“Epilepsy in dementia with Lewy bodies”



Sheria Robinson-Lane, PhD, RN (Nursing)

Assistant Professor, Dept. of Systems, Populations & Leadership, U. Michigan

“Improving health outcomes of black caregivers of older adults with dementia”

Challenges

- Selection of diverse group of scholars
 - Wide talent pool across 3 universities
 - Partnerships w/Michigan Center for Urban African American Research; new AD-RCMAR
- Funding
 - Leveraging existing resources: T32s, CTSA, Center pilot grants (ADCC, Pepper, various aging centers at U-M)
 - Trainees' own grant support (e.g., NSF, NIH)
 - Future donor support?
- Incentivizing mentors' involvement
- Tailoring programming to individual needs
 - Content; timeline

