



REC at Michigan ADCC



Roger Albin, MD
REC Core Leader
University of Michigan



Erin Fox
REC Coordinator
University of Michigan

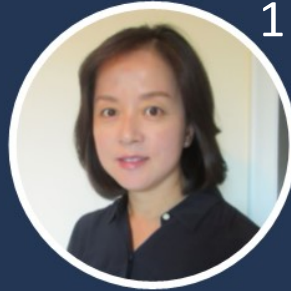


Peter Lichtenberg, PhD
REC Co-Core Leader
Wayne State University

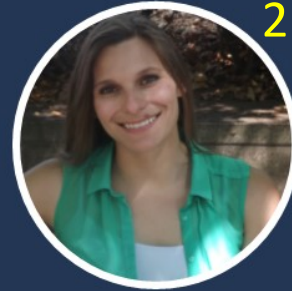
Our REC mentees, first two years



Sheria Robinson-Lane, PhD, RN



Hwajung Choi, PhD



Julia Gerson, PhD



Lenette Jones, PhD, RN, ACNS-BC

**Michigan Alzheimer's Disease
Core Center
Research Education Component
Trainees
(~5 trainees/year)**



Jiayu Zhou, PhD



Ben Combs, PhD



Wassim Tarraf, PhD



Rohit Marawar, MD



DeAnnah Byrd, PhD



Jessica Damoiseaux, PhD

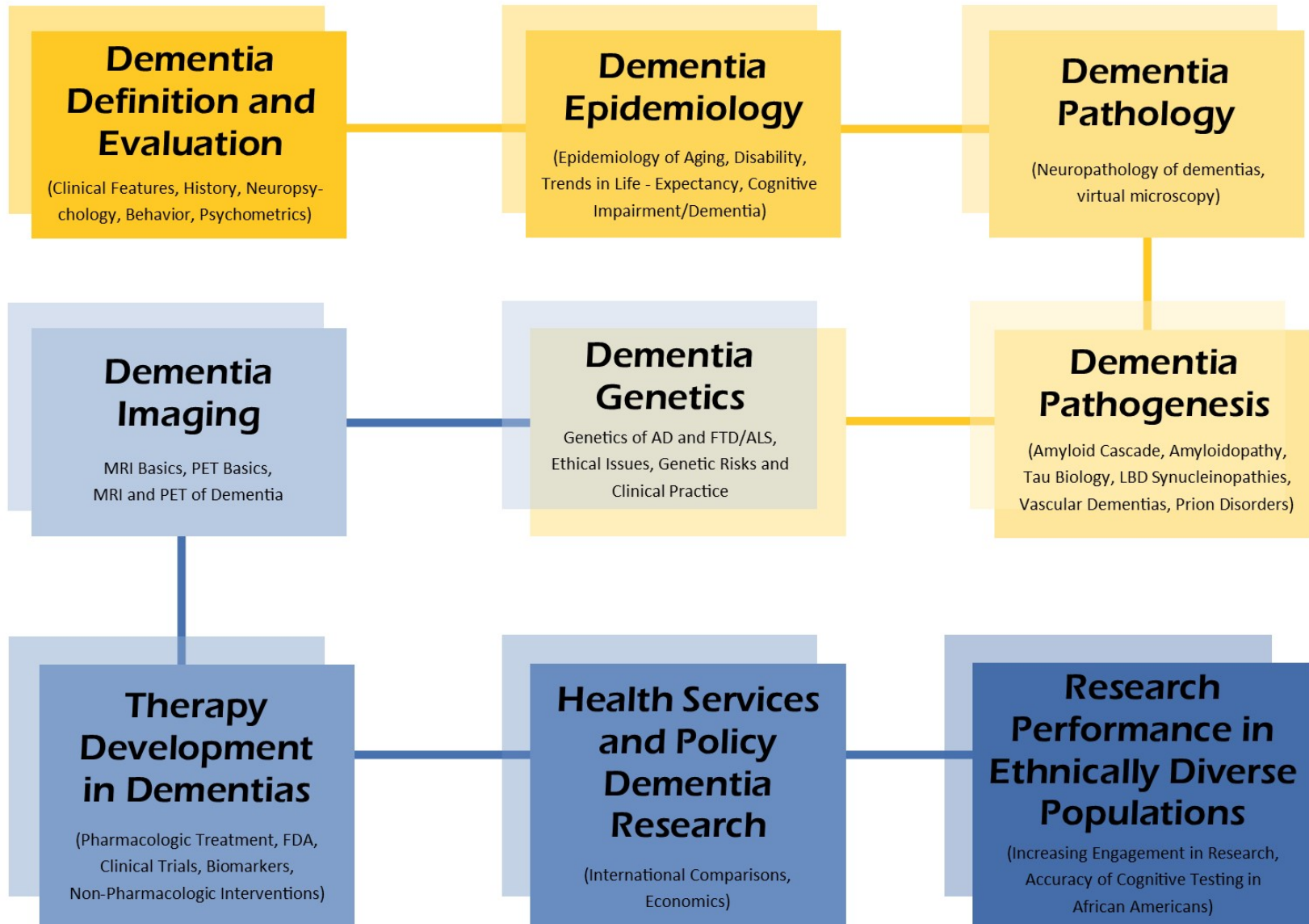
Aims (from P30 proposal)

- Recruit junior investigators (junior faculty, fellows, postdocs) from three participating institutions into dementia research
- Enhance junior investigator's research through experienced mentoring committees
- Develop a comprehensive, interdisciplinary curriculum to educate junior investigators broadly on dementia research
- Provide practical training in career skills including manuscript and grant preparation, presentation skills, leadership opportunities
 - Poster and oral presentation at MADCC Research Symposium (x2)
 - ADCC/Pepper Center Grant Writing Retreat
 - Bimonthly Clinical Pathological Correlation Conferences
 - Bimonthly Journal Club
- Enhance diversity of investigators in dementia-related research
 - Partnerships with Michigan Center for Urban African American Aging Research (MCUAAAR, at both UM and WSU), among others
 - Include Community Based Participatory Research methods in our curriculum so that investigators will be well-positioned to work effectively with diverse populations.

Michigan Alzheimer's Disease Core Center

Research Education Component Core Curriculum

(series of online learning modules on a wide variety of topics)



How do we fund REC mentees?

- REC was a late addition to RFA in 2015 (unfunded mandate)
- Leverage existing T32 training grants across diverse schools
- Encourage mentees to apply for ADCC annual pilot funding
- As we implemented REC programs, we realized that a major focus should be to help mentees develop compelling NIH/NSF/private foundation grant applications
- Eventually, hope to land private funds to endow junior investigator support

Challenges

- How to fund mentees?
- How to strike a balance between “value” and “burden” of mentorship activities?
- What is the ideal training timeline? (standard for us is two years, but some mentees may require more time)
- How do we distribute fairly across three universities?
And across disciplines?
- What is the best way to get the word out and select future trainees?