



Research Education Component

Roger Albin, MD

Department of Neurology, University of Michigan

Peter Lichtenberg, PhD

Institute of Gerontology, Wayne State University

REC Personnel



Roger Albin, MD
Core Leader



Peter Lichtenberg, PhD
Wayne State University
Core Leader



Irving Vega, PhD
Michigan State University
Co-Investigator



Kenneth Langa, MD, PhD
Co-Investigator



Erin Fox, BA
REC Core Coordinator

REC Aims

Aim 1: Recruit talented junior investigators into interdisciplinary dementia research

Aim 2: Enhance junior investigator research skills

Aim 3: Develop a comprehensive, interdisciplinary curriculum to educate junior investigators about the broad spectrum of dementia research

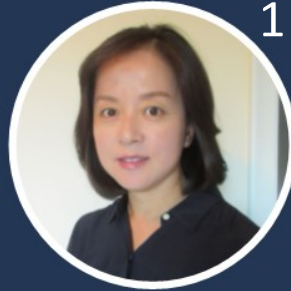
Aim 4: Provide practical training in crucial career skills including manuscript and grant application preparation, oral presentation skills, leadership, and interpersonal skills

Aim 5: Enhance the diversity of investigators working on dementia-related research

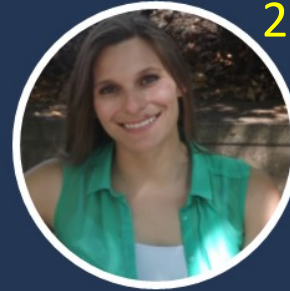
Our REC mentees, first two years



Sheria Robinson-Lane, PhD, RN



Hwajung Choi, PhD



Julia Gerson, PhD



Lenette Jones, PhD, RN, ACNS-BC

**Michigan Alzheimer's Disease
Core Center
Research Education Component
Trainees**
(~5 trainees/year)



Jiayu Zhou, PhD



Ben Combs, PhD



Wassim Tarraf, PhD



Rohit Marawar, MD



DeAnnah Byrd, PhD



Jessica Damoiseaux, PhD

Enhanced Mentoring Plan

Mentoring Committees

- Transdisciplinary, multi-campus meeting every 6 months

Co-Sponsored Research Retreat with Pepper Center

MADRC Annual Research Symposium

- Sheria Robinson-Lane, Lenette Jones, Julia Gerson, DeAnnah Byrd had oral presentations; all mentees presented posters

Mezey Travel Award

- Lenette Jones received

MADRC Pilot Project Program

- Sheria Robinson-Lane received



Weblink: alzheimers.med.umich.edu/curriculum/



Launched September 2018

Dementia for Scientists

An online curriculum by the
Michigan Alzheimer's Disease Center

Module 1:
Dementia Definition
& Evaluation

Module 2:
Dementia Pathology
& Pathogenesis

Module 4:
Dementia Imaging

Module 6:
Health Services &
Policy Dementia
Research

Module 3:
Dementia Genetics

Module 5:
Therapy Development
in Dementias

Module 7:
Research Performance
in Ethnically Diverse
Populations

 To access, search for the Michigan Alzheimer's Disease Center on YouTube.
For questions or feedback, please contact Erin Fox at eefox@med.umich.edu

New Additions to the Mentoring Program

MICHR Mentoring Resources

MADRC Journal Club

- All mentees had the opportunity to present orally

Junior Investigators session at Fall ADC meeting

- HwaJung Choi to attend (1st mentee class)

NIA Mock Study Section

- Julia Gerson attended in March 2019

Washington U. workshop: *African American participation in AD Research: Effective Strategies*

- DeAnnah Byrd, Sheria Robinson-Lane attended



Highlights from 1st Class

- HwaJung Choi, PhD (U-M): K01 award on care utilization among family caregivers; R21 award
- Jiayu Zhou, PhD (MSU): Multiple NSF awards, including early career development award
 - Machine learning applied to Big Data
- Jeske Damoiseaux, PhD (WSU): MADRC pilot award, 2 R01 applications
 - fMRI studies of age-related cognitive decline



Highlights from 2nd Class

- Lenette Jones, PhD (U-M): K01 award on cognition, hypertension management in African Americans
- DeAnnah Byrd, PhD (WSU): K01 application on racial disparities in cognitive health outcomes
- Sheria Robinson-Lane, PhD (U-M): K01 application on African American family caregivers, PWD
- Julia Gerson, PhD (U-M): F32 award on role of UBQLN2 in tauopathies, synucleinopathies



Welcome to our newest class!

2019 – 2021 Junior Investigators



Amara Ezeamama (Epidemiology)
Assistant Professor, Michigan State University



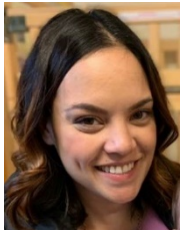
Courtney Polenick (Human Development & Family Studies)
Assistant Professor, University of Michigan



Ana Daugherty (Psychology)
Assistant Professor, Wayne State University



Ilce Medina Meza (Food Science)
Assistant Professor, Michigan State University



Annalise Rahman-Filipiak
(Clinical Psychology)
Clinical Lecturer, University of Michigan



Omar Ahmed (Neuroscience)
Assistant Professor, University of Michigan



Charlie Fehl (Medicinal Chemistry)
Assistant Professor, Wayne State University



MICHIGAN ALZHEIMER'S DISEASE RESEARCH CENTER

REC Future Directions

- Revise Dementia Curriculum
 - Update Existing Talks
 - Add Additional Talks – UCI Collaboration +
 - Develop Certificate Granting Course
- Focus on Assisting Mentees with Grant Apps
- Financial Support for Mentees
 - Pepper Center Model – Salary Support with Matches from Dept. and Dean's Office
 - Joint Program with Pepper Center?
 - Tiered Model
 - Pilot Support for Those with Ks
 - Salary Support for Those Working Towards Ks
 - Will depend on budget!

