

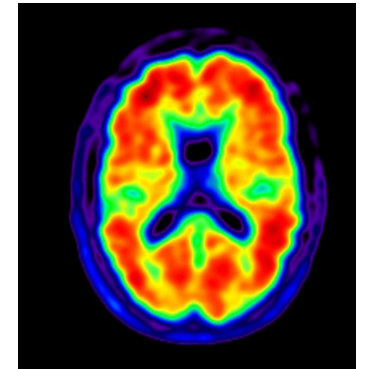


# NACC Update Imaging Core Session

**Sarah Biber, PhD, NACC Program Director**

---

**May 13, 2022 – ADRC Spring Meeting**



# NACC's Expanded Data Coordination Role for the ADRC Program

## Coordinate data collection



Communication  
Education  
Evaluation/tracking  
Meeting coordination

## Co-develop pipelines



In collaboration with  
partners e.g. SCAN,  
LONI, ADRCs

## Integrate the data



Connect all ADRC data  
types to NACC IDs (with  
NCRAD and NIAGADS)  
  
Make data inter-operable,  
harmonized, and FAIR

## Share and facilitate use of the data for impactful research



Co-develop and host the “front door/  
one-stop-shop” for ADRC data  
  
Provide tools for effective cohort  
selection (e.g. Leaf)  
  
Collaborate with ADRC researchers and  
provide biostatistics consultations  
  
Fund the ADRCs and early investigators  
  
Conduct Alzheimer's research

## Coordinate and synergize across interrelated data initiatives for the ADRCs



Track and coordinate across initiatives  
  
Streamline and reduce redundancies  
to maximize impact

# NACC Support for ADRC Imaging Initiatives



# ADRC Imaging Initiatives that NACC Actively Supports

## MRI Legacy

- **Charlie DeCarli and NACC**
- **Goal:** Curate and utilize invaluable imaging data from last 20 years by applying QA/QC, metadata, connecting to NACC IDs and making it searchable through the Data Front Door

## SCAN

- **Bill Jagust & Cliff Jack, LONI and NACC**
- **Goal:** Standardization of MRI/PET image acquisition protocols

## PET Legacy Project

- **Beth Mormino, SCAN, and NACC**
- **Goal:** Capture, curate, and analyze all sharable amyloid PET data on NACC participants that was collected before Jan 2021

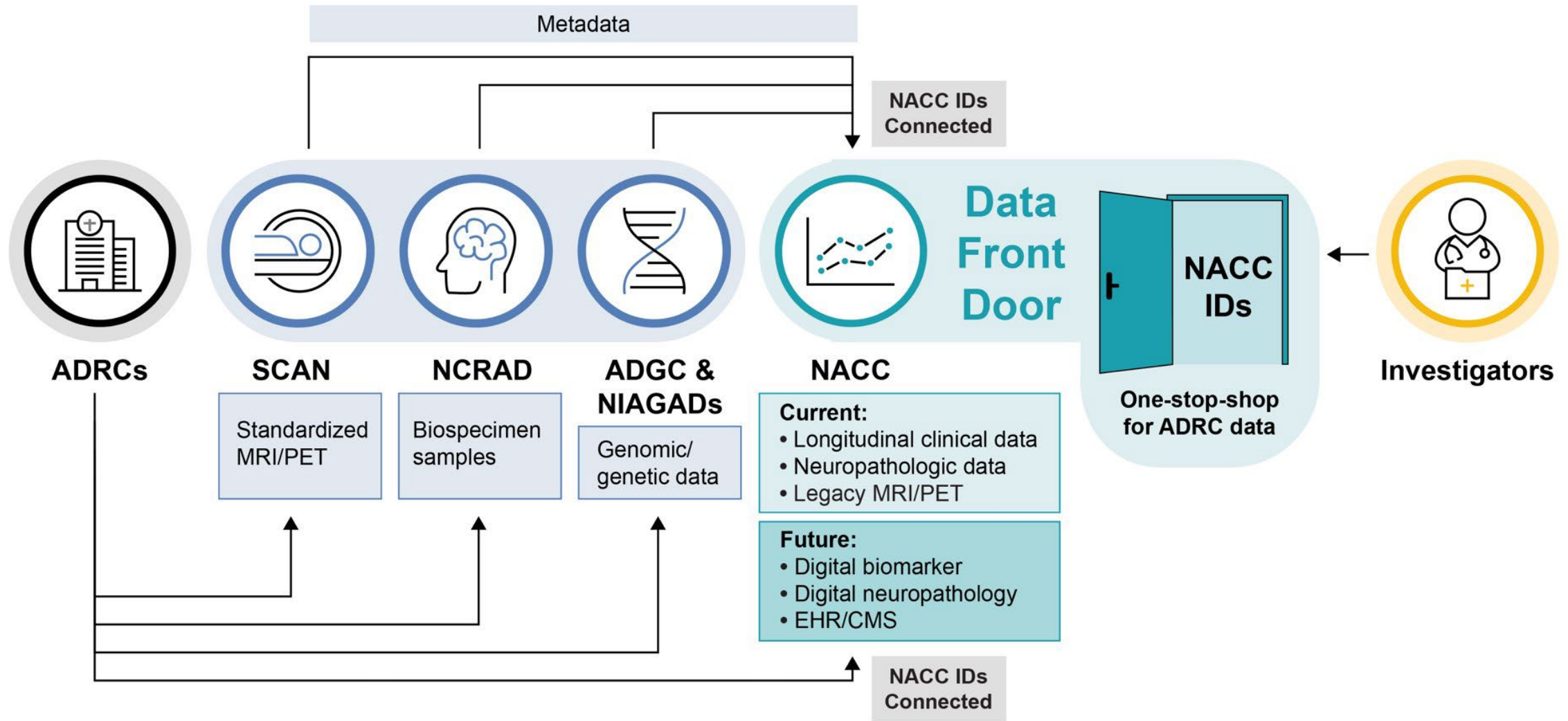
## CLARITi – ATN RO1

- **Beth Mormino, Sterling Johnson, and NACC**
- **Goal:** Amplify SCAN pipeline and better characterize AD heterogeneity

## U24 – ADSP Phenotype Harmonization

- **Tim Hohman**
- **Goal:** Harmonize data for participants in the ADSP across 50+ studies (Including NACC data)

# UDSv4 – Pipeline and Database



# SCAN Overview

---

**Goal:** Collect large quantities of standardized imaging data and connect them to NACC IDs to advance the field

- Standardization of image acquisition protocols
- Infrastructure for curation and analysis
- Funding (via NIA) for image acquisition through short-term ADRC administrative supplements
- <https://scan.naccddata.org>





## ADRCs

### Data generation and submission

- Collect standard data via SCAN protocol
- Submit data to LONI via NACC web portal

Coordination / messaging

PET SUVRs and MRI volume data  
returned to sites

UDS



### Data coordination, collection, sharing and integration

- Coordinate data collection: communication, education, evaluation
- Collaborate to build data pipeline
- Integrate imaging data with NACC IDs and all other ADRC data
- Host ADRC data "front door" for the scientific community

NACC ID is generated or existing  
NACC ID is updated - sent back to  
LONI so that image can be ID tagged

Raw image files

NACC ID generated/updated

Site reporting

Summary data

### Data pipeline and collection

- Store and index images
- Check for subject identifiers
- QA images for SCAN protocols
- Build the data pipeline in collaboration with NACC
- LONI/SCAN submission site hosted at NACC

LONI

Raw image files (ID tag)

Curated files

scan

### SCAN data analysis

- Curate images
- MRI measurements (e.g. volume)
- PET measurements (e.g. SUVR for amyloid and tau)
- QA/QC checks (checking for adherence to SCAN protocols)

# Amplifying the SCAN Pipeline

Institution	First Contacts	SCAN Connection
UNIVERSITY OF CALIFORNIA AT DAVIS	Charles DeCarli, MD	SCAN Collaborator, Imaging Steering Committee
MAYO CLINIC ROCHESTER	Kejal Kantarci, M.D.	SCAN Co-I, Imaging Steering Committee
UNIVERSITY OF MICHIGAN AT ANN ARBOR		SCAN Collaborator
UNIVERSITY OF SOUTHERN CALIFORNIA	Paul E. Kim	SCAN Collaborator, Supplement
UNIVERSITY OF WISCONSIN-MADISON	Sterling Johnson	Imaging Steering Committee, Supplement
STANFORD UNIVERSITY	Elizabeth Mormino	Imaging Steering Committee
RUSH UNIVERSITY MEDICAL CENTER	Konstantinos Arfanakis	Imaging Steering Committee, Supplement
UNIVERSITY OF PENNSYLVANIA	John D'etre	Imaging Steering Committee
NORTHWESTERN UNIVERSITY AT CHICAGO	Emily Rogalski	Imaging Steering Committee
NEW YORK UNIVERSITY	Henry Rusinek	Supplement
UNIVERSITY OF KENTUCKY	Brian Gold	Supplement
UNIVERSITY OF KANSAS MEDICAL CENTER	William Brooks, Ph.D	Supplement
MOUNT SINAI		Supplement
UNIVERSITY OF CALIFORNIA, SAN DIEGO	Anders Dale	Supplement
EMORY UNIVERSITY	Deqiang Qiu	Supplement
UNIVERSITY OF WASHINGTON		Supplement
UNIVERSITY OF PITTSBURGH AT PITTSBURGH	James T. Becker, Ph.D	Supplement
UNIVERSITY OF CALIFORNIA, SAN FRANCISCO	Howard J. Rosen	Supplement
CLEVELAND CLINIC LERNER COM-CWRU		Supplement
UNIVERSITY OF CALIFORNIA-IRVINE		Supplement

## SCAN Checklists – MRI and PET

- Roadmap for getting SCAN ready
- Standard tool for assessing SCAN progress and participation
- Can be updated in real-time on NACC SCAN portal (via REDCap)

MRI

☒ ☐ ☐

PET

☒ ☐ ☐



# Amplifying the SCAN Pipeline

Institution	First Contacts	SCAN Connection
UNIVERSITY OF CALIFORNIA AT DAVIS	Charles DeCarli, MD	SCAN Collaborator, Imaging Steering Committee
MAYO CLINIC ROCHESTER	Kejal Kantarci, M.D.	SCAN Co-I, Imaging Steering Committee
UNIVERSITY OF MICHIGAN AT ANN ARBOR		SCAN Collaborator
UNIVERSITY OF SOUTHERN CALIFORNIA	Paul E. Kim	SCAN Collaborator, Supplement
UNIVERSITY OF WISCONSIN-MADISON	Sterling Johnson	Imaging Steering Committee, Supplement
STANFORD UNIVERSITY	Elizabeth Mormino	Imaging Steering Committee
RUSH UNIVERSITY MEDICAL CENTER	Konstantinos Arfanakis	Imaging Steering Committee, Supplement
UNIVERSITY OF PENNSYLVANIA	John D'etre	Imaging Steering Committee
NORTHWESTERN UNIVERSITY AT CHICAGO	Emily Rogalski	Imaging Steering Committee
NEW YORK UNIVERSITY	Henry Rusinek	Supplement
UNIVERSITY OF KENTUCKY	Brian Gold	Supplement
UNIVERSITY OF KANSAS MEDICAL CENTER	William Brooks, Ph.D	Supplement
MOUNT SINAI		Supplement
UNIVERSITY OF CALIFORNIA, SAN DIEGO	Anders Dale	Supplement
EMORY UNIVERSITY	Deqiang Qiu	Supplement
UNIVERSITY OF WASHINGTON		Supplement
UNIVERSITY OF PITTSBURGH AT PITTSBURGH	James T. Becker, Ph.D	Supplement
UNIVERSITY OF CALIFORNIA, SAN FRANCISCO	Howard J. Rosen	Supplement
CLEVELAND CLINIC LERNER COM-CWRU		Supplement
UNIVERSITY OF CALIFORNIA-IRVINE		Supplement

## SCAN Checklists – MRI and PET

- Roadmap for getting SCAN ready
- Standard tool for assessing SCAN progress and participation
- Can be updated in real-time on NACC SCAN portal (via REDCap)

**MRI**
☒ ☐ ☐

**PET**
☒ ☐ ☐

## Site Interviews: May through June 2022

- MRI and PET checklists reviewed
- Will assess barriers and potential next steps

# Amplifying the SCAN Pipeline

Institution	First Contacts	SCAN Connection
UNIVERSITY OF CALIFORNIA AT DAVIS	Charles DeCarli, MD	SCAN Collaborator, Imaging Steering Committee
MAYO CLINIC ROCHESTER	Kejal Kantarci, M.D.	SCAN Co-I, Imaging Steering Committee
UNIVERSITY OF MICHIGAN AT ANN ARBOR		SCAN Collaborator
UNIVERSITY OF SOUTHERN CALIFORNIA	Paul E. Kim	SCAN Collaborator, Supplement
UNIVERSITY OF WISCONSIN-MADISON	Sterling Johnson	Imaging Steering Committee, Supplement
STANFORD UNIVERSITY	Elizabeth Mormino	Imaging Steering Committee
RUSH UNIVERSITY MEDICAL CENTER	Konstantinos Arfanakis	Imaging Steering Committee, Supplement
UNIVERSITY OF PENNSYLVANIA	John D'etre	Imaging Steering Committee
NORTHWESTERN UNIVERSITY AT CHICAGO	Emily Rogalski	Imaging Steering Committee
NEW YORK UNIVERSITY	Henry Rusinek	Supplement
UNIVERSITY OF KENTUCKY	Brian Gold	Supplement
UNIVERSITY OF KANSAS MEDICAL CENTER	William Brooks, Ph.D	Supplement
MOUNT SINAI		Supplement
UNIVERSITY OF CALIFORNIA, SAN DIEGO	Anders Dale	Supplement
EMORY UNIVERSITY	Deqiang Qiu	Supplement
UNIVERSITY OF WASHINGTON		Supplement
UNIVERSITY OF PITTSBURGH AT PITTSBURGH	James T. Becker, Ph.D	Supplement
UNIVERSITY OF CALIFORNIA, SAN FRANCISCO	Howard J. Rosen	Supplement
CLEVELAND CLINIC LERNER COM-CWRU		Supplement
UNIVERSITY OF CALIFORNIA-IRVINE		Supplement

## SCAN Checklists – MRI and PET

- Roadmap for getting SCAN ready
- Standard tool for assessing SCAN progress and participation
- Can be updated in real-time on NACC SCAN portal (via REDCap)



## Site Interviews: May through June 2022

- MRI and PET checklists reviewed
- Will assess barriers and potential next steps

## Summary Report

- SCAN status at each site
- Challenges and barriers to SCAN participation
- Will inform development of revamped SCAN web portal at NACC

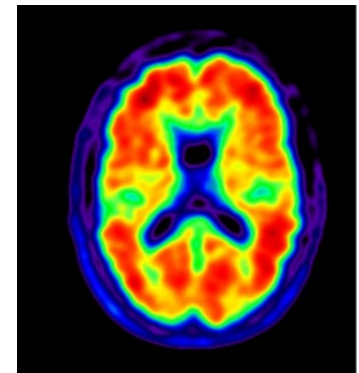
# SCAN Live Leaderboards

## SCAN Live Leaderboard Building Plans

- To be built in collaboration with LONI and SCAN
- Will live on SCAN web portal at NACC
  - Tracks MRI and PET SCAN readiness (checklists) and participation
  - # Participants that imaging data has been submitted for
  - # PET and # MRI scans submitted
  - % that adhere to the SCAN protocol

## Rapid QA/QC Feedback Loop

- Exploring options with SCAN and LONI for expediting and standardizing feedback process
- Monthly reports: % that meet QA/QC requirements



# SCAN Live Leaderboards

## SCAN Readiness

Institution	Update your SCAN status	SCAN Readiness									
		Liason information submitted	Regulatory approval obtained	MRI Readiness				PET Readiness			
				Scanner option selected	Protocol eFile received	Scanner certified	Eligible participants identified	Scanner qualified	Tracer sources established	PET protocol and upload form reviewed with imaging cennter staff	Eligible participants identified
Center 1	REDCap										
Center 2	REDCap										
Center 3	REDCap										

## SCAN Participation

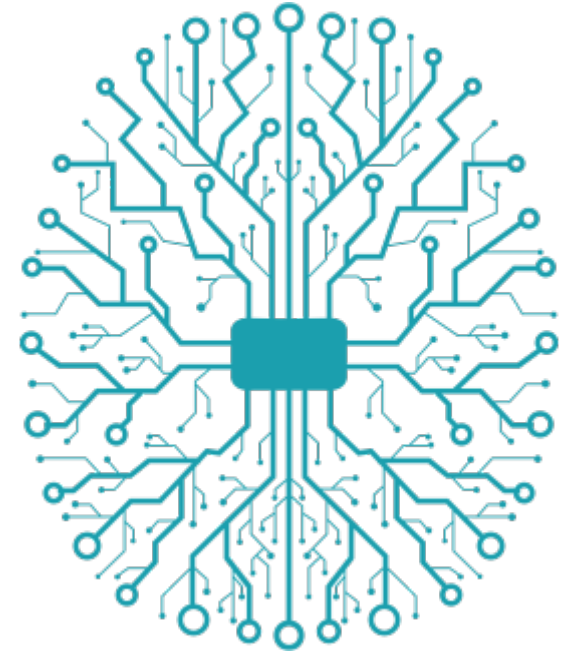
Institution	Total # participants	SCAN Participation						
		MRI Participation				PET Participation		
		# Participants	# Exams submitted	# Series submitted	% of series that adhere to the SCAN protocol	# Participants	# scans submitted	% of series that adhere to the SCAN protocol
Center 1								
Center 2								
Center 3								

# SCAN Next Steps

---

## Next Steps

- Conduct and analyze interviews
- Revamp SCAN web portal
- Build live leaderboard to incentivize and track ADRC participation
- Finish pipeline build in collaboration with LONI



# CLARiTI - Prospective RO1

---

## Goals

- Amplify and support the SCAN initiative and expand standard image acquisition
- Develop innovative new methodologies to better characterize heterogeneity and predict disease progression



# CLARiTI - Prospective RO1

---

## Survey 100% Response Rate with Valuable Information

- **Survey outcomes informed:**
  - ADRC interest level
  - Site budget needs
  - Estimated cohort size
  - Barriers to MRI/PET submission
  - Site collaborators

## ADRCs

### Data generation and submission

- Collect standard data via SCAN protocol
- Submit data to LONI via NACC web portal

Coordination / messaging

PET SUVRs and MRI volume data  
returned to sites

UDS



### Data coordination, collection, sharing and integration

- Coordinate data collection: communication, education, evaluation
- Collaborate to build data pipeline
- Integrate imaging data with NACC IDs and all other ADRC data
- Host ADRC data “front door” for the scientific community

NACC ID is generated or existing  
NACC ID is updated - sent back to  
LONI so that image can be ID tagged

Raw image files

NACC ID generated/updated

Site reporting

Summary data

### Data pipeline and collection

- Store and index images
- Check for subject identifiers
- QA images for SCAN protocols
- Build the data pipeline in collaboration with NACC
- LONI/SCAN submission site hosted at NACC

LONI

Raw image files (ID tag)

Curated files

scan

### SCAN data analysis

- Curate images
- MRI measurements (e.g. volume)
- PET measurements (e.g. SUVR for amyloid and tau)
- QA/QC checks (checking for adherence to SCAN protocols)

## ADRCs

## Data generation and submission

- Collect standard data via SCAN protocol
- Submit data to LONI via NACC web portal
- Amplified PET and MRI data collection / submission
- Funding via NACC, std IRB, central radiotracer contracts

**Non-SCAN compliant advanced MRI data**  
 - Uploaded to Flywheel via NACC and then submitted to LONI and linked to NACC IDs

SCAN Compliant  
Raw image files

Coordination / messaging

PET SUVRs and MRI volume data returned to sites

Amyloid and Tau status returned to sites (clinical reads)

UDS

UW  
Neurphopath  
Core

**Digital neuropath data**

- Processed at the UW Neuropath core and stored at NACC and linked to NACC IDs

NACC ID is generated or existing NACC ID is updated  
 - sent back to LONI so that image can be ID tagged

NACC ID generated

Site reporting

Summary data

## Data coordination, collection, sharing and integration

- Coordinate data collection: communication, education, evaluation
- Collaborate to build data pipeline
- Integrate imaging data with NACC IDs and all other ADRC data
- ADRC data "front door" for the scientific community

Summary data gets sent to NACC.  
 - It is integrated with UDS data.

Clinical data summary

Some UDS data

## CLARiTI

## ATN data analysis

- ATN clinical interpretation
- Hypothesis testing
- Blood biomarker integration (NCRAD)

MRI/PET image access

## Data pipeline and collection

- Store and index images
- QA images for SCAN protocols
- Build the data pipeline in collaboration with NACC
- LONI/SCAN submission site hosted at NACC

LONI

Raw image files (ID tag)

Curated files

scan

## SCAN data analysis

- Curate images
- MRI measurements (e.g. volume)
- PET measurements (e.g. SUVR for amyloid and tau)
- QA checks

Raw image files

# CLARiTI – Research collaboration

---

## NACC Team



Gary Chan, PhD  
Associate Director



Dean Shibata, MD  
Co-Investigator



Yen-Chi Chen, PhD  
Co-Investigator

**Assist study design, including power analysis**

**Analyze the data using innovative machine learning or biostatistical methods**

- Development and validation of probability profile
- Multi-view dimensional reduction
- Topological data analysis
- Elastic shape analysis



**Thank you!**



# Connect with NACC

**Sarah Biber – Program Director**

---

biber@uw.edu



UNIVERSITY of WASHINGTON