



# NACC Session

---

Friday, October 20

2023 Fall ADRC Meeting



**WALTER KUKULL, PHD**  
PI/Director, NACC  
Professor, Epidemiology



**SARAH BIBER, PHD**  
Executive Director



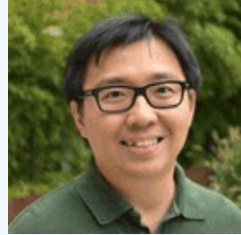
**SEAN MOONEY, PHD**  
Associate Director,  
NACC Chief Research  
Information  
Officer, UW Medicine



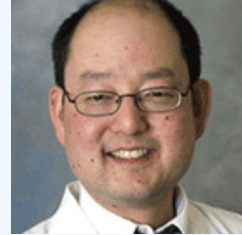
**KARI STEPHENS, PHD**  
Associate Director, NACC,  
Professor, Family Medicine



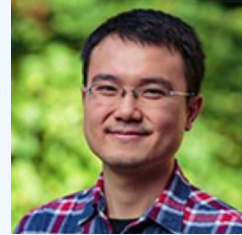
**CHARLES MOCK,  
MD, PHD, FACS**  
Associate Director,  
NACC Professor,  
Epidemiology and Surgery



**KWUN CHUEN GARY  
CHAN, PHD**  
Associate Director  
Professor, Biostatistics,  
Health Systems  
and Population Health



**DEAN K. SHIBATA,  
MD**  
Co-investigator, NACC;  
Professor, Radiology



**YEN-CHI CHEN, PHD**  
Co-investigator, NACC  
Assistant Professor,  
Statistics



**KYLE ORMSBY, PHD**  
Co-Investigator  
Visiting Associate  
Professor, Mathematics



**BEN KELLER, PHD**  
Software Engineer 3



**CHANDIMA HEWA-  
ADUNGODAGE, PHD**  
Software Engineer 3



**JOYLEE WU**  
Database Administrator



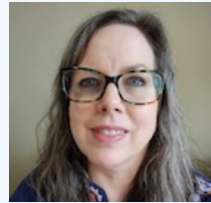
**JANENE HUBBARD, BS**  
Research Consultant



**BRENDAN SMITH**  
Database Administrator



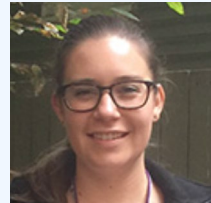
**ZACH STARK, BBA**  
Software Engineer 3



**LAURA MCLEOD, BBA**  
REDCap Developer



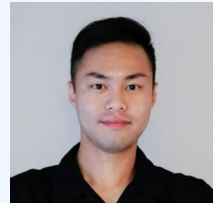
**JESSICA CULHANE, MS**  
Research Scientist 3



**KATHRYNN  
GAUTHREAUX, MS**  
Research Scientist 3



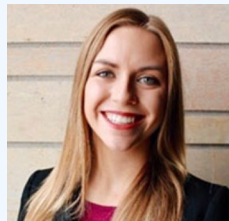
**ZACK MILLER**  
Research Consultant



**YUXUAN WU, PHD**  
Post-Doc



**JESS WELSCH, MBA**  
Senior Project Manager



**HANNAH ROSENTRER**  
Manager of Special Projects



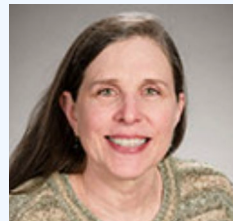
**BRITTANY HALE**  
Project Manager



**FAITH BUCKLEY, MBA**  
Admin Specialist



**JINGYAN XIA**  
Grants & Finance Manager



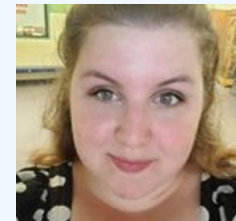
**VALERIE HOCKENS**  
Program Ops Specialist -  
Finance



**BRITTANY FAIR, MS**  
Communications Manager,



**AMY YOUNG**  
Public Information  
Specialist



**AILEEN IDA, MS**  
Communication Specialist



**SARAH YASUDA**  
Research Assistant





**WALTER KUKULL, PHD**  
PI/Director, NACC  
Professor, Epidemiology



**SARAH BIBER, PHD**  
Executive Director



**SEAN MOONEY, PHD**  
Associate Director,  
NACC Chief Research  
Information  
Officer, UW Medicine



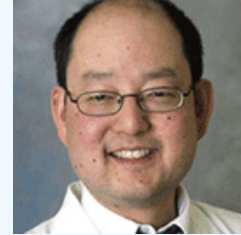
**KARI STEPHENS, PHD**  
Associate Director, NACC,  
Professor, Family Medicine



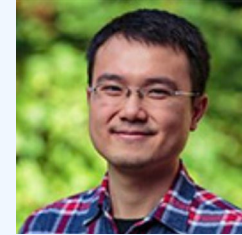
**CHARLES MOCK,  
MD, PHD, FACS**  
Associate Director,  
NACC Professor,  
Epidemiology and Surgery



**KWUN CHUEN GARY  
CHAN, PHD**  
Associate Director  
Professor, Biostatistics,  
Health Systems  
and Population Health



**DEAN K. SHIBATA,  
MD**  
Co-investigator, NACC;  
Professor, Radiology



**YEN-CHI CHEN, PHD**  
Co-investigator, NACC  
Assistant Professor,  
Statistics



**KYLE ORMSBY, PHD**  
Co-Investigator  
Visiting Associate  
Professor, Mathematics



**BEN KELLER, PHD**  
Software Engineer 3



**CHANDIMA HEWA-  
ADUNGODAGE, PHD**  
Software Engineer 3



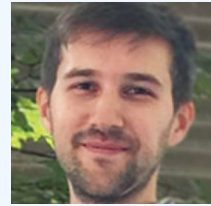
**JOYLEE WU**  
Database Administrator



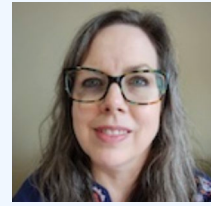
**JANENE HUBBARD, BS**  
Research Consultant



**BRENDAN SMITH**  
Database Administrator



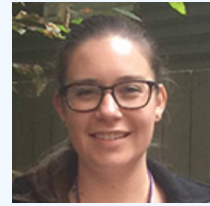
**ZACH STARK, BBA**  
Software Engineer 3



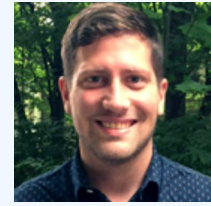
**LAURA MCLEOD, BBA**  
REDCap Developer



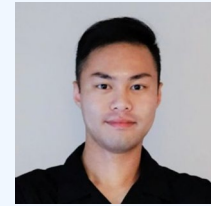
**JESSICA CULHANE, MS**  
Research Scientist 3



**KATHRYNN  
GAUTHREAU, MS**  
Research Scientist 3



**ZACK MILLER**  
Research Consultant



**YUXUAN WU, PHD**  
Post-Doc



**JESS WELSCH, MBA**  
Senior Project Manager



**HANNAH ROSENRETER**  
Manager of Special Projects



**BRITTANY HALE**  
Project Manager



**FAITH BUCKLEY, MBA**  
Admin Specialist



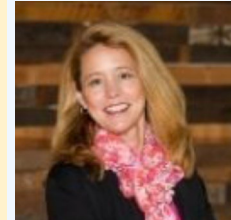
**JINGYAN XIA**  
Grants & Finance Manager



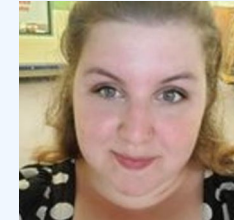
**VALERIE HOCKENS**  
Program Ops Specialist -  
Finance



**BRITTANY FAIR, MS**  
Communications Manager,



**AMY YOUNG**  
Public Information  
Specialist



**AILEEN IDA, MS**  
Communication Specialist



**SARAH YASUDA**  
Research Assistant





**WALTER KUKULL, PHD**  
PI/Director, NACC  
Professor, Epidemiology



**SARAH BIBER, PHD**  
Executive Director



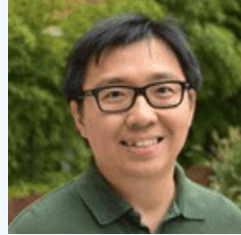
**SEAN MOONEY, PHD**  
Associate Director,  
NACC Chief Research  
Information  
Officer, UW Medicine



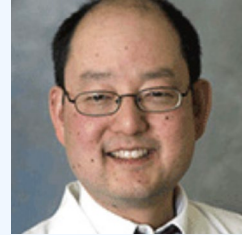
**KARI STEPHENS, PHD**  
Associate Director, NACC,  
Professor, Family Medicine



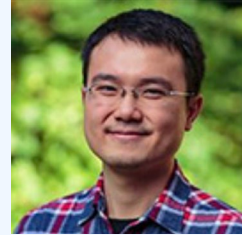
**CHARLES MOCK,  
MD, PHD, FACS**  
Associate Director,  
NACC Professor,  
Epidemiology and Surgery



**KWUN CHUEN GARY  
CHAN, PHD**  
Associate Director  
Professor, Biostatistics,  
Health Systems  
and Population Health



**DEAN K. SHIBATA,  
MD**  
Co-investigator, NACC;  
Professor, Radiology



**YEN-CHI CHEN, PHD**  
Co-investigator, NACC  
Assistant Professor,  
Statistics



**KYLE ORMSBY, PHD**  
Co-Investigator  
Visiting Associate  
Professor, Mathematics



**BEN KELLER, PHD**  
Software Engineer 3



**CHANDIMA HEWA-  
ADUNGODAGE, PHD**  
Software Engineer 3



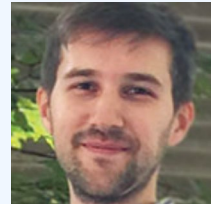
**JOYLEE WU**  
Database Administrator



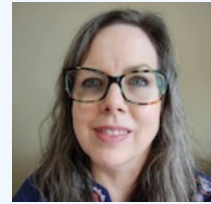
**JANENE HUBBARD, BS**  
Research Consultant



**BRENDAN SMITH**  
Database Administrator



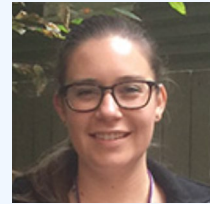
**ZACH STARK, BBA**  
Software Engineer 3



**LAURA MCLEOD, BBA**  
REDCap Developer



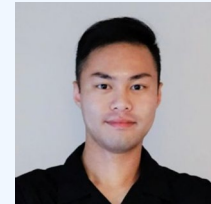
**JESSICA CULHANE, MS**  
Research Scientist 3



**KATHRYNN  
GAUTHREAUX, MS**  
Research Scientist 3



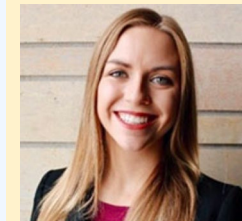
**ZACK MILLER**  
Research Consultant



**YUXUAN WU, PHD**  
Post-Doc



**JESS WELSCH, MBA**  
Senior Project Manager



**HANNAH ROSENTRER**  
Manager of Special Projects



**BRITTANY HALE**  
Project Manager



**FAITH BUCKLEY, MBA**  
Admin Specialist



**JINGYAN XIA**  
Grants & Finance Manager



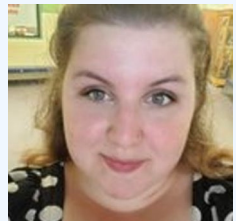
**VALERIE HOCKENS**  
Program Ops Specialist -  
Finance



**BRITTANY FAIR, MS**  
Communications Manager,



**AMY YOUNG**  
Public Information  
Specialist



**AILEEN IDA, MS**  
Communication Specialist



**SARAH YASUDA**  
Research Assistant





**WALTER KUKULL, PHD**  
PI/Director, NACC  
Professor, Epidemiology



**SARAH BIBER, PHD**  
Executive Director



**SEAN MOONEY, PHD**  
Associate Director,  
NACC Chief Research  
Information  
Officer, UW Medicine



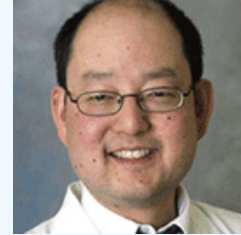
**KARI STEPHENS, PHD**  
Associate Director, NACC,  
Professor, Family Medicine



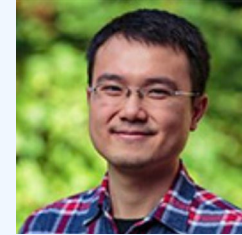
**CHARLES MOCK, MD, PHD, FACS**  
Associate Director,  
NACC Professor,  
Epidemiology and Surgery



**KWUN CHUEN GARY CHAN, PHD**  
Associate Director  
Professor, Biostatistics,  
Health Systems  
and Population Health



**DEAN K. SHIBATA, MD**  
Co-investigator, NACC;  
Professor, Radiology



**YEN-CHI CHEN, PHD**  
Co-investigator, NACC  
Assistant Professor,  
Statistics



**KYLE ORMSBY, PHD**  
Co-Investigator  
Visiting Associate  
Professor, Mathematics



**BEN KELLER, PHD**  
Software Engineer 3



**CHANDIMA HEWA-ADUNGODAGE, PHD**  
Software Engineer 3



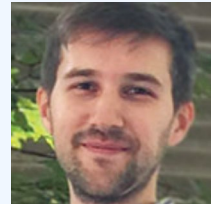
**JOYLEE WU**  
Database Administrator



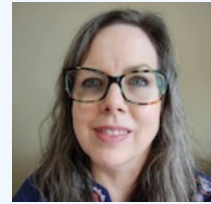
**JANENE HUBBARD, BS**  
Research Consultant



**BRENDAN SMITH**  
Database Administrator



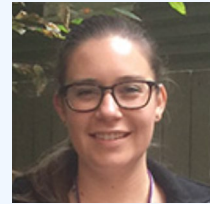
**ZACH STARK, BBA**  
Software Engineer 3



**LAURA MCLEOD, BBA**  
REDCap Developer



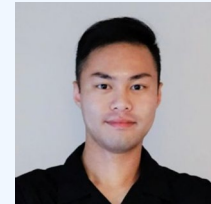
**JESSICA CULHANE, MS**  
Research Scientist 3



**KATHRYNN GAUTHREAU, MS**  
Research Scientist 3



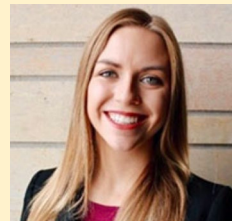
**ZACK MILLER**  
Research Consultant



**YUXUAN WU, PHD**  
Post-Doc



**JESS WELSCH, MBA**  
Senior Project Manager



**HANNAH ROSENRETER**  
Manager of Special Projects



**BRITTANY HALE**  
Project Manager



**FAITH BUCKLEY, MBA**  
Admin Specialist



**JINGYAN XIA**  
Grants & Finance Manager



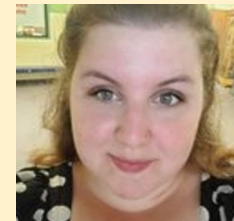
**VALERIE HOCKENS**  
Program Ops Specialist -  
Finance



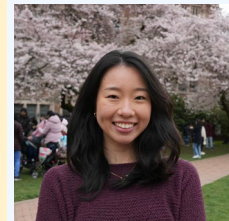
**BRITTANY FAIR, MS**  
Communications Manager,



**AMY YOUNG**  
Public Information  
Specialist



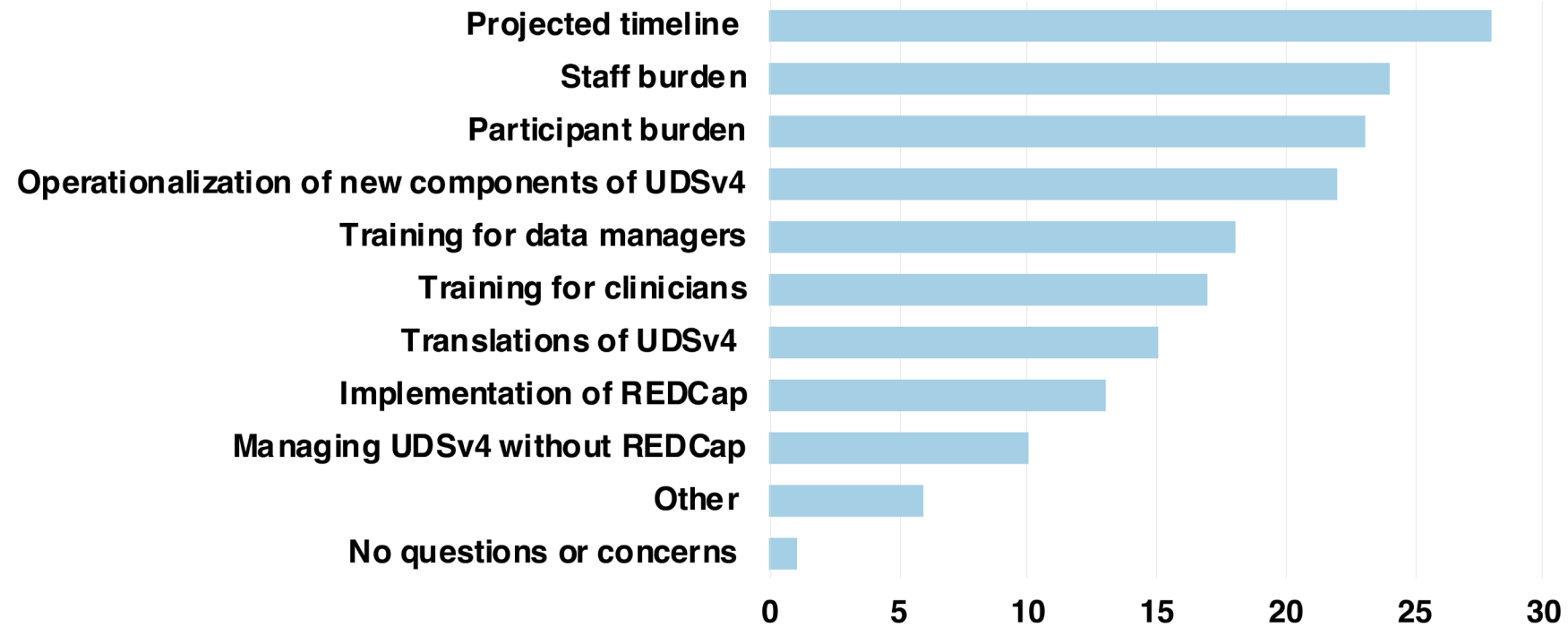
**AILEEN IDA, MS**  
Communication Specialist



**SARAH YASUDA**  
Research Assistant

# NACC Survey Results

What area(s) do you have questions or concerns about with regards to UDSv4?



October 2023 Survey

# UDSv4 Presenters and Panelists

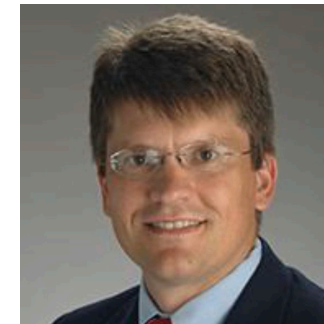
---



**GREG JICHA, PHD**  
University of Kentucky  
ADRC



**MEREDITH ZOZUS,  
PHD CCDM**  
South Texas ADRC



**JEFF BURNS, MD**  
University of Kansas  
ADRC



**CINDY CARLSSON, PHD**  
UW-Madison ADRC



**SARAH GOTHARD, MA**  
OHSU ADRC



**SARAH BIBER, PHD**  
NACC Executive Director