

**Imaging in the ADRCs:  
Administrative Supplement Outcomes  
May 2, 2023**

# Alzheimer's Disease Research Centers of Excellence

## GOAL: Perform Cutting-Edge Diagnoses with Imaging

- **ADRC research diagnosis requires A-T-N classification**
  - Neuropathology still important, but *in vivo* research diagnosis is the future
- **ADRCs provide the combination of**
  - Standardized ATN scan protocols and existing infrastructure for **sharing**
  - Underrepresented participants and heterogeneous disease representation
  - Fluid samples/biomarkers and Uniform Data Set (UDS)
  - Neuropathology and genetics
  - Infrastructure for training
- Broader dissemination and standardization of neuroimaging and other biomarker tools for diagnosing AD/ADRD are a priority for NIA with continuous planning since 2017.
- SCAN is funded to manage the collection of standardized imaging data on ADRC participants.
- NACC is responsible for managing neuroimaging data in the repository and share de-identified ADRC PET and MRI scans with investigators.

# Imaging Steering Committee Survey to the Centers (March 2020)

## Expected Clinical Participants [23 respondents]

#	%	Group
22	96	MCI
20	87	Older Controls (>65)
16	70	AD

	None	MRI	Amyloid	Tau
<20		1	1	2
20-50		5	8	8
51-100		4	6	6
101-200		5	5	5
>200		8	3	2

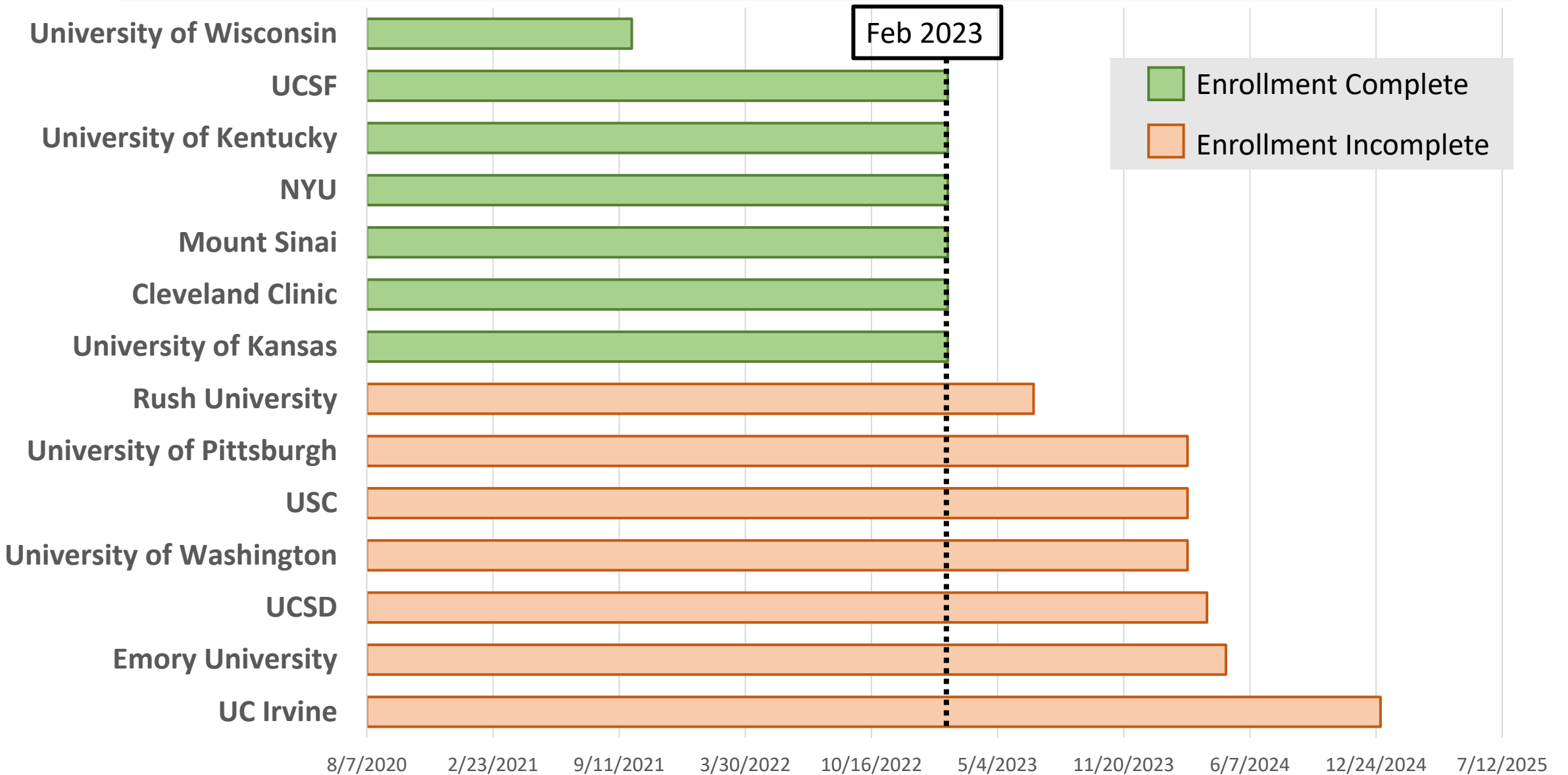
# Neuroimaging Administrative Supplements

## FY 2020

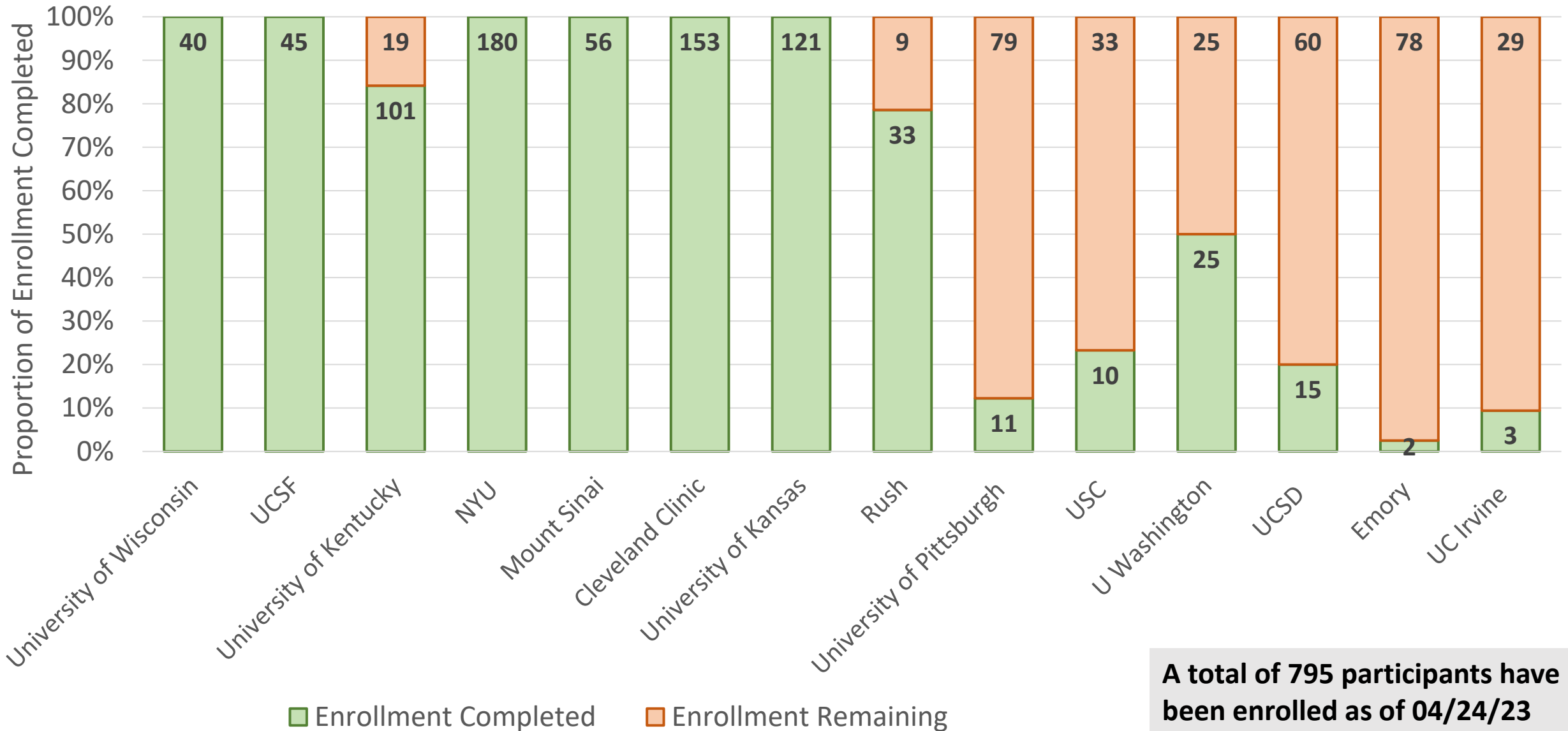
- Administrative supplements up to \$250K Direct for one year
- Provide data for SCAN to test its pipeline, and for NACC to develop sharing interface
- ~25 ATN scans per administrative supplement
- Scanning participant justification required
- ADRCs can include other biomarkers, but only neuroimaging costs will be covered
- Diverse and/or unique cohorts

Fiscal Year	Direct Cost	Total Cost
2020	\$3,500,000	\$5,637,936

# ADRC Imaging Supplement Completion Timeline



# ADRC Imaging Supplement Enrollment Status



**A total of 795 participants have been enrolled as of 04/24/23**

# Neuroimaging Implementation Challenges

## Equipment

- Scanner acquisitions delays
- Aged equipment
- Shared ownership
- Usage capacity/availability

## Communication

- MR and PET Certifications
- MR and PET Protocols
- SCAN Start up – January 2021

## Participant Recruitment

- Participant Education
- Scheduling
- Slow to recruit
- Diversity

## Parallel Initiatives

- Conflation of recruitment success

## Staffing

- Schedulers
- Imaging Technicians
- Turnovers and shortages
- Imaging shutdown

## PET Imaging

- Lacking institutional infrastructure for adoption
- Varied level of prioritization

## Radiotracer

- Procurement delays
- Production failures
- Radiopharmacy limitations

## COVID

- Varied operational dates