

# What's happening in the ADRC Neuropathology Cores

ADRC Fall Meeting  
October 16 2024

## **ADRC Neuropathology Steering Committee**

Chair- Brittany Dugger, PhD University of California  
Davis ADRC

Member- Alifiya Kapasi, PhD Rush University ADRC

Member- Thomas Wisniewski, NYU Langone's ADRC



# Neuropathology Core Steering Committee updates for 2024-2025



Thomas M. Wisniewski, MD  
Farewell!



Alifiya Kapasi, PhD  
Incoming chair!



Margaret Flanagan, MD  
Welcome!!

**SOUTH TEXAS  
ALZHEIMER'S DISEASE  
RESEARCH CENTER**



## A BIG THANK YOU TO ALL WHO APPLIED!!!!!!

# New this year!!!! Early Career representatives!!!

- Thank you, REC core, for your input!!
- **Eligible candidates included:**
- Post-docs, PhD students, early career faculty, assistant professors, associate professors, and REC scholars who are affiliated with a Neuropathology Core at an ADRC. Self-nominations are welcome.
- Not current/past R01 grantee; K, F, and other mentoring/career development grants are okay.
- Not a member of an ADRC represented by the elected committee members

A BIG THANK YOU TO ALL  
WHO APPLIED!!!!!!

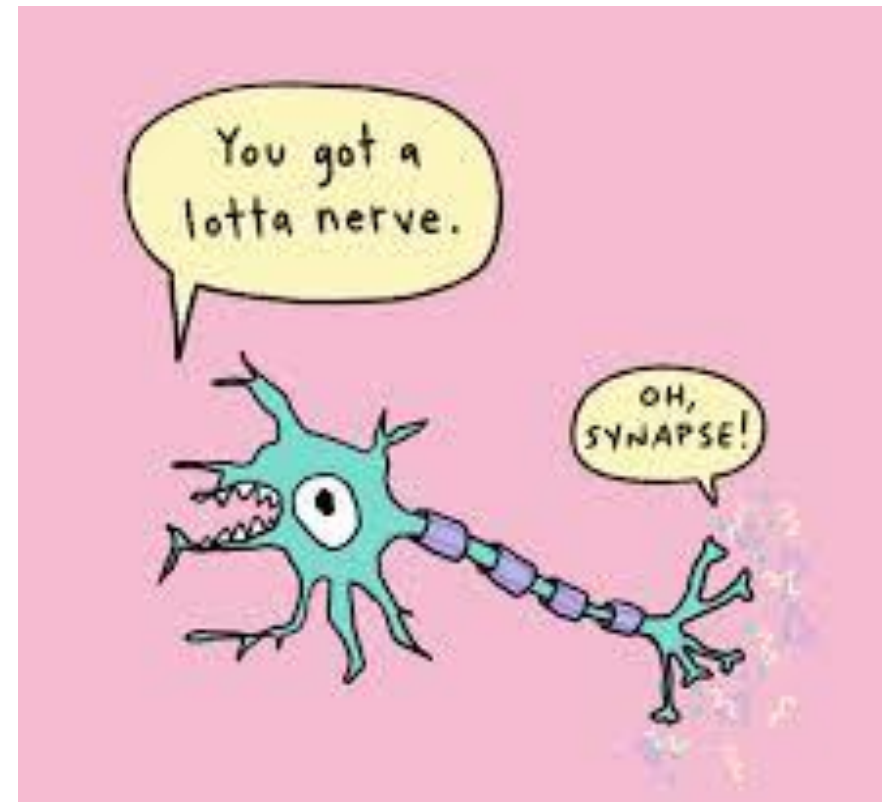
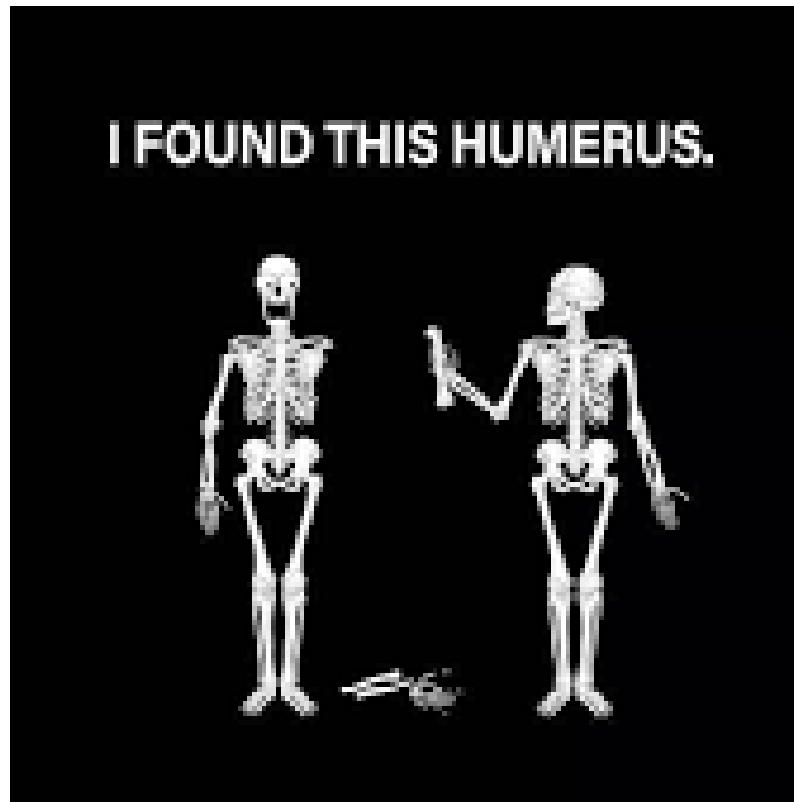


Daniel Ohm, PhD  
University of Pennsylvania ADRC



Caitlin Latimer, MD, PhD  
University of Washington ADRC

# What else is going on in the fabulous ADRC Neuropathology Core realm?



# ADRC CPC National Video Library Workgroup: Purpose and Progress



Margaret Flanagan, MD  
UT San Antonio

**To develop a CPC library as an educational tool (enhance our pipeline of a diverse workforce in AD/ABCD)**

**Meetings began January 2024 – discussion of opportunities and challenges**

HIPAA/privacy/confidentiality – discussing IRB perspectives

Differences in format across ADRCs

CME?

Access to recordings – who and how

Could help messaging encouraging brain donation

**Completed “scrubbing”/deidentification trial successfully using South Texas ADRC recorded CPC in Summer 2024**

UKY Pete Nelson: recording & trial “scrubbing” on 9/12/2024 CPC

UCI Elizabeth Head: recording and trial “scrubbing” on 09/02/24 CPC

**Met w/NACC to discuss goals of CPC library**

**Next we are meeting to discuss ethical/legal aspects of CPC library w/experts**

Facilitated by Nina Silverberg

Jalayne Arias & Emily Largent attending

Crystal Glover (Rush) and Caitlyn Latimer (UW): institution specific feedback on questions

# ADRC CPC National Video Library Workgroup: Survey results

32 ADRCs & 63 total responses...

- **Purpose of CPCs?**
  - Training 50%
  - Case Review 43%
  - Other: consensus reviews, research ideas, community engagement
- **CPC Structure**
  - Duration: 71% 1 hour
  - Frequency: 47% monthly
  - Cases Discussed: 1-2 (71%)
- **Common Data Reviewed:** Clinical, MRI, Neuropsychology Outcomes, Biomarkers (CSF/plasma), Amyloid PET, Tau PET, Neuropathology findings
- **65% of CPCs are not recorded (HIPAA/privacy concerns)**
- **40% are willing to contribute to a video library**
  - However, some concerns were raised about confidentiality & informal discussions
- **CPC Library Development**
  - 94% Support forming working group to set guidelines 😊
  - 76% interested in attending CPCs from other ADRCs
  - 38% prefer limited access via login for select persons or ADRC groups

# ADRC digital pathology working group journal club

**Our mission:** To facilitate the review and critical analysis of recent scientific publications and promote collaboration among researchers interested in integrating digital tools for pathology



Returning this fall as a bimonthly seminar series

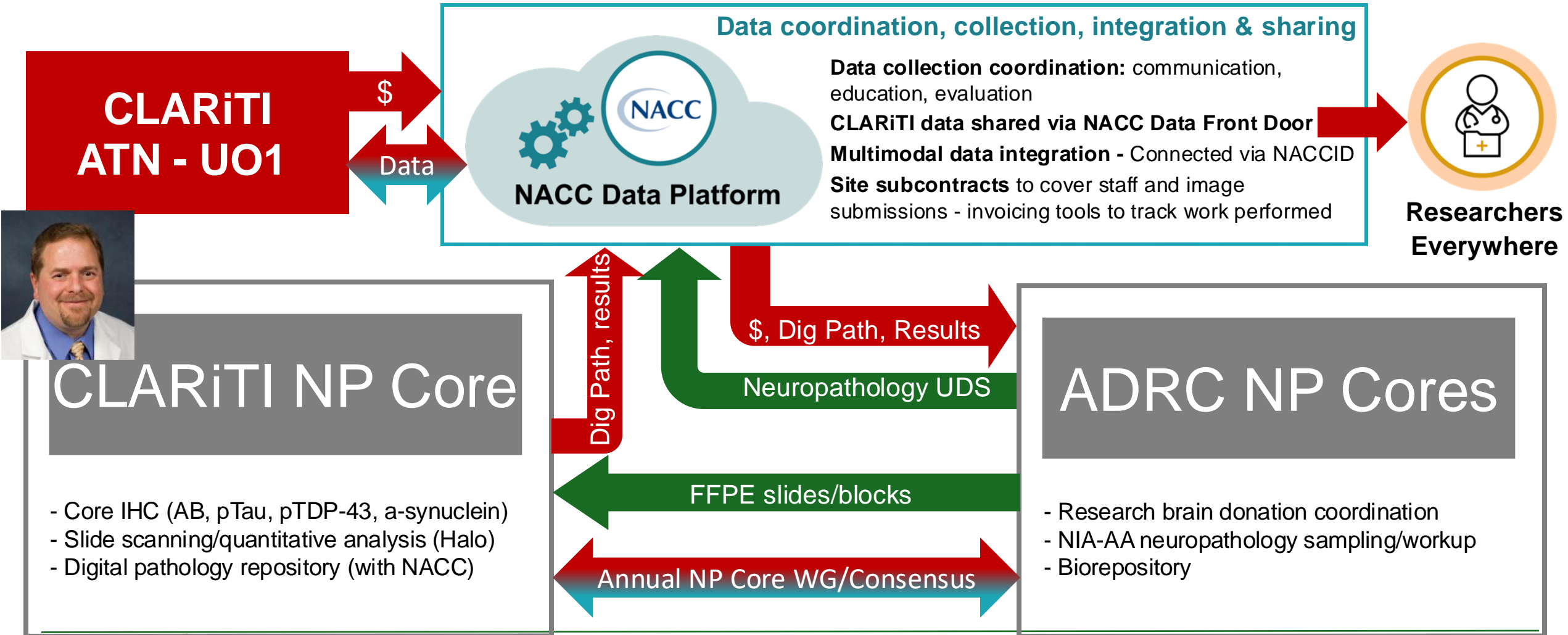
We are actively seeking speakers, please email [Kurt.Farrell@mssm.edu](mailto:Kurt.Farrell@mssm.edu) if you are interested, times are flexible!

Check us out on YouTube, scan the QR code!



# Neuropathology Core Overview: CLARiTI

## (CLarity in ADRD Research Through Imaging)





Connecting Machine Readable Digital Human AD/ADRD  
Neuropathological Library Platforms for Advanced Analytics (U24  
Clinical Trial Not Allowed)

RFA-NS-22-062

**Brain Digital Slide Archive: An Open  
Source Platform for Data Sharing and  
Analysis of Digital Pathology  
(U24NS133949)**

- Dr. David Gutman, Emory
- Dr. Thomas Pearce, Pittsburgh
- Dr. Brittany Dugger, UC-Davis
- Dr. Lee Cooper, Northwestern



**Federated Digital Pathology Platform for  
AD/ADRD Research and Diagnostics  
(U24NS133945)**

- Dr. Pete Nelson, Kentucky
- Dr. Cody Bumgardner, Kentucky
- Dr. Maggie Flanagan, UTHSA



Focus on Computer Resources

**The Digital Slide Archive: A Software Platform  
for Management, Integration, and Analysis of  
Histology for Cancer Research**

David A. Gutman<sup>1,2,3</sup>, Mohammed Khalilia<sup>1</sup>, Sanghoon Lee<sup>1</sup>, Michael Nalisnik<sup>2</sup>,  
Zach Mullen<sup>4</sup>, Jonathan Beezley<sup>4</sup>, Deepak R. Chittajallu<sup>4</sup>, David Manthey<sup>4</sup>,  
and Lee A.D. Cooper<sup>2,3,5</sup>

Cancer  
Research



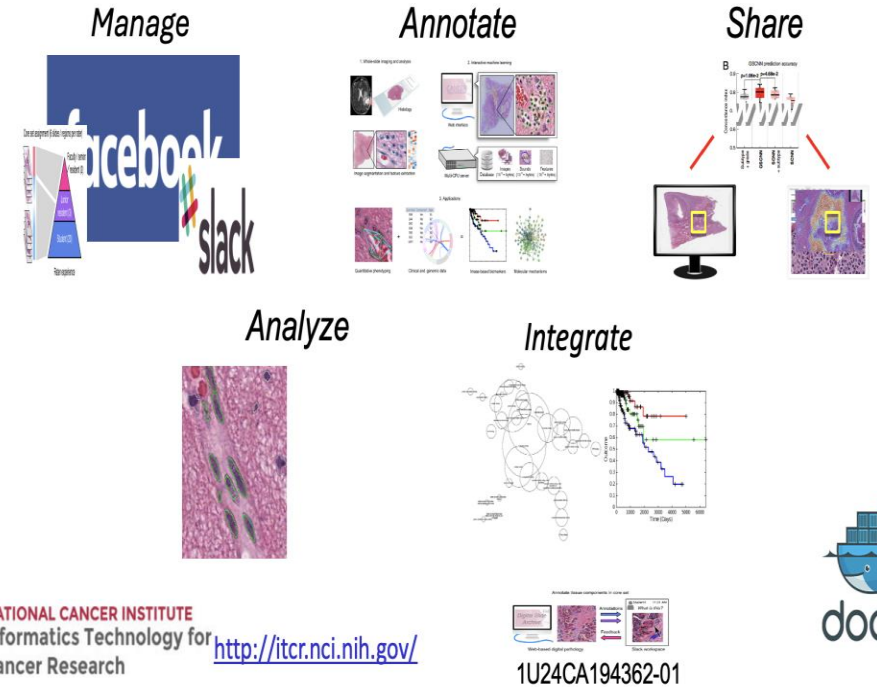
**Brain Digital Slide Archive** (Adapt existing mechanisms for federated  
model of WSI storage & interaction tailored for AD/ADRD research and diagnostics)

# Enhance & leverage DSA infrastructure for 'BDSA'

- Supports multiple slide-scanning vendors & file types
- Provides application programming interfaces (APIs) in vendor agnostic manner for:
  - accessing image data
  - creating/querying annotations
  - deploying image analysis

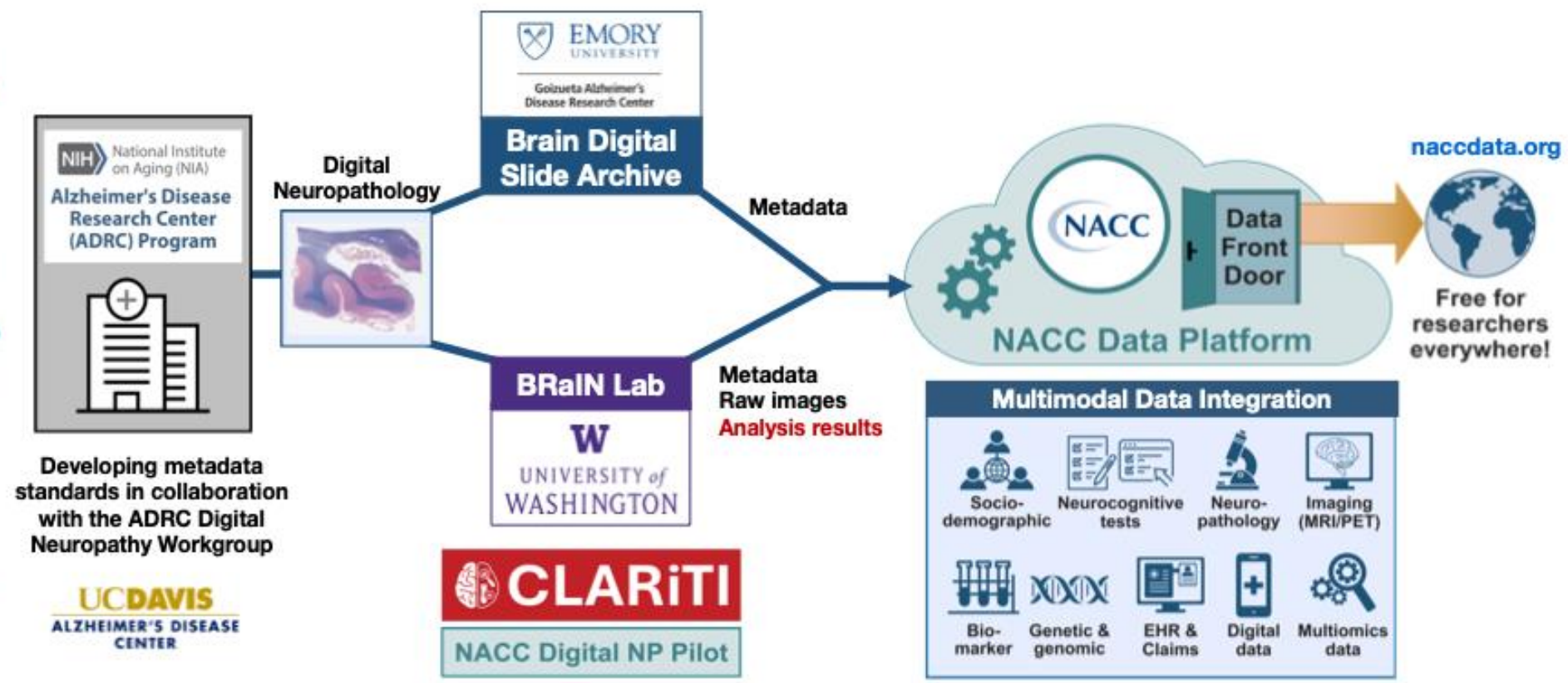
## Adapt existing DSA mechanisms for our federated model of WSI storage & interaction

- *tailor for AD/ADRD research & diagnostics\**



# NACC Supplement from NIA so support development of standards and pipelines to support and promote digital pathology resources, sharing, and research

**Establishing standards and co-developing pipelines to collect, analyze, integrate, and share ADRC participant digital neuropathology data via the NACC Data Platform**



Neuropathology image from: McKenzie, A.T., Marx, G.A., Koenigsberg, D. *et al.* Interpretable deep learning of myelin histopathology in age-related cognitive impairment. *acta neuropathol commun* 10, 131 (2022). <https://doi.org/10.1186/s40478-022-01425-5>



# Digital Neuropathology Metadata Standardization

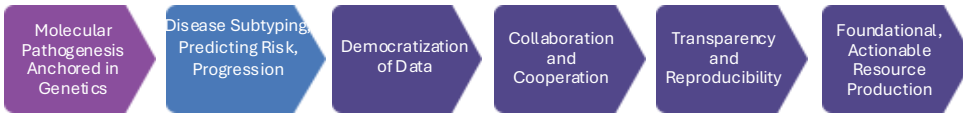


NACC, Brain Digital Slide Archive, CLARiTI, and the ADRC Neuropathology Core Steering Committee are collaborating on creating a standardized list of metadata associated with digital neuropathology images.

## Goals:

- Interoperability between various digital neuropathology efforts across the ADRC program (e.g., CLARiTI, Brain Digital Slide Archive, Digital Neuropathology Pilot)
- Produce a minimum viable metadata set to be tied to digital neuropathology image data that will be shared with researchers worldwide via the NACC Data Platform

**Stay tuned!**  
We will be sharing this metadata list with NP Core Leaders for feedback.

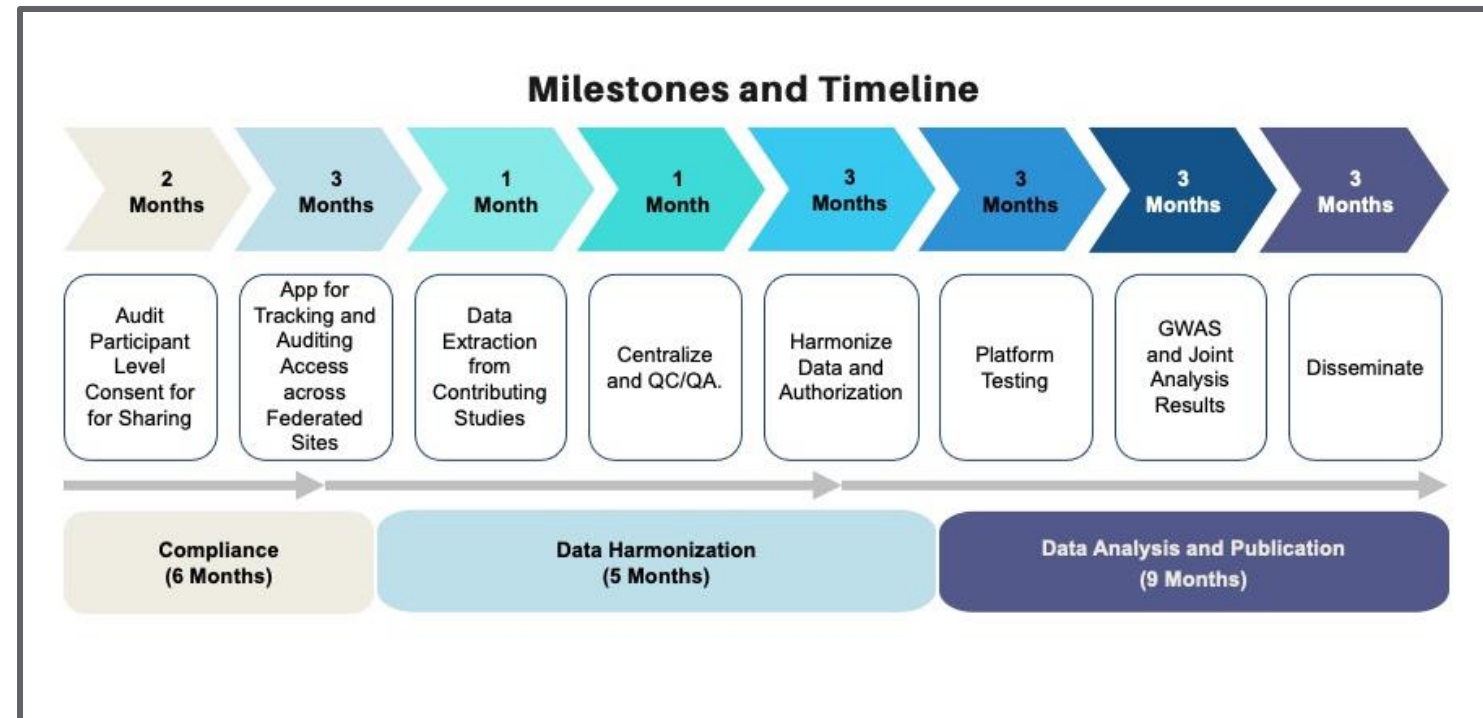


*Preparation for new data types like digital pathology as well as CARD's upcoming connection to the Clinical Center will be streamlined*

## Digital Pathology Infrastructure

- Verily ViewPoint WorkBench
- 15 partners across academia and non-profit for 300 + CDEs & data
- Staged for success
  - Tabular data
  - Genetics + Spatial
  - Algorithm "bake off"
  - Harmonized reprocessing

**Foundational CDEs being used at NACC and ADRC for interoperability**



Email Mike Nalls [mike@datatecnica.com](mailto:mike@datatecnica.com) if interested!



# Special Session on Brain Donation

(hosted by ORE Core & Neuropathology Core)

Wednesday, October 16

9:00 AM - 9:05 AM

5min

## Introduction

Dorothy Farrar-Edwards,  
PhD Wisconsin ADRC

Crystal M. Glover, PhD  
Rush University ADRC

9:05 AM - 10:00 AM

55min

## Panel Discussion

Moderator: Crystal M. Glover, PhD  
Rush University ADRC

Katherine Brandt, MM  
Massachusetts ADRC

Darby Morhardt, PhD  
Northwestern ADRC

Tish Hevel  
Brain Donor Project

Arline Faustin, MD  
NYU ADRC

Nancy Cherico, PhD  
Boston University ADRC  
Participant Perspective

Collaboration between the  
Neuropathology and ORE Core  
steering committees

Thank you panelists and moderators!!!



# Out of 8,188 participants who have autopsy data available in NACC by center as of September 2024 data freeze...

	N	frequency (out of 8,188)
Asian	74	1%
Hispanic/Latino	290	4%
Black	311	4%

## Top centers

Center name	Hispanic/Latino decedents	Center name	Black decedents	Center name	Asian decedents
UCSD	58	Rush University	51	UCSF	12
USC	42	UC-Davis	33	USC	8
UC-Davis	30	Washington University, St. Louis	30	UC-Davis	7
Columbia University	25	Emory University	23	Massachusetts ADRC	6
UCSF	23	Johns Hopkins University	18	UC-Irvine	6
		Northwestern University	18		

# # of participants who have autopsy data available by center in NACC as of September 2024 data freeze

Center name	American Indian/Alaskan Native decedents
UC-Irvine	2
UCSF	2
University of Kansas	1
Oregon Health & Science University	1
UCSD	1
University of Texas, Southwestern	1
<b>Total</b>	<b>8</b>

Center Name	Pacific Islander decedents
UCSF	3
USC	2
Northwestern University	1
<b>Total</b>	<b>6</b>



# Neuropathology Core Session

Wednesday, October 16

10:20 AM - 10:35 AM

15min

**What's Happening in the ADRC Neuropathology Core**

Brittany Dugger, PhD  
UC Davis ADRC

10:35 AM - 10:50 AM

15min

**Brain Donation Survey Results**

Alifiya Kapasi, PhD  
Rush University Medical Center

10:50 AM - 11:00 AM

10min

**Culture-Centric Narrative as a Tool for Messaging about Brain Donation**

Jennifer Lingler, PhD, RN  
University of Pittsburgh ADRC

11:00 AM - 11:10 AM

10min

**Enrollment into Brain Donation in a Diverse Cohort of Oldest Old - Lessons Learned from the Life After 90 Study**

Rachel Whitmer, PhD  
UC Davis ADRC

11:10 AM - 11:20 AM

10min

**Q&A**

